

GMK 5180 / 6200-1

Pulling device of the bottom axle of the boom

Application of the correction

This correction sheet is valid for cranes with the following works numbers:
 from GMK 5180 8028
 from GMK 6200 9005

These cranes are accompanied by one of the following operating manuals.

Operating manual Ident no. ¹⁾	Date of issue ²⁾	Non-applicable page
2 085 291	01.11.1999	7-32
2 084 511	10.11.1999	7-32
2 084 513	01.11.1999	7-32
2 084 520	05.11.1999	7-16

¹⁾ The identity number is stated on the cover sheet and on the bottom line of every page.

²⁾ The date of issue can be found on the cover sheet and on the collar or the perforation on each page.

Reason for the correction

The connections for the pulling device of the bottom axle of the boom have changed due to constructional modifications on the counterweight lifting gear hydraulics.

Correction and information

- As the owner/operator of the crane, inform all persons who work with your GMK 5180 / GMK 6200-1 about this correction.
- Please cut out the following sticker and stick it onto pages 7-32 of your operating manual. Please mark all available operating manuals.

Please be sure to do this correction. It is for the safety and security of your co-workers and your truck crane.

Deutsche GROVE® GmbH

Sticker

Connecting/disconnecting the hydraulic connection

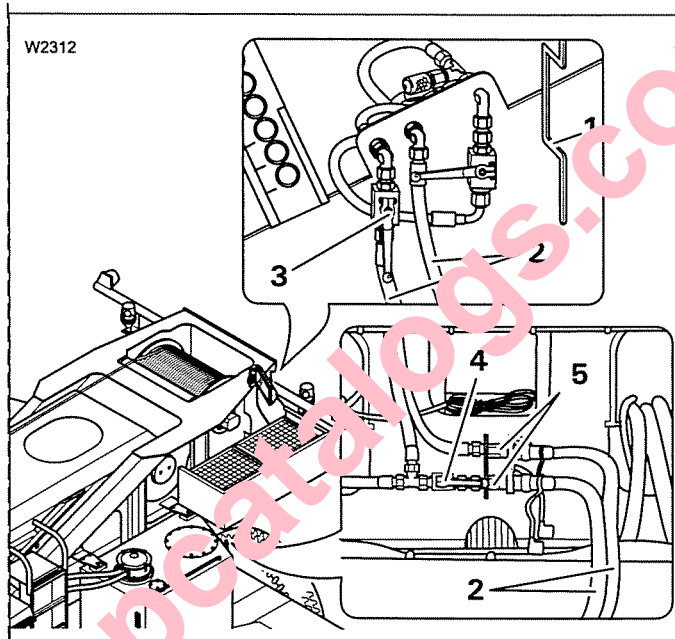


2 084 552 en

The pulling device is connected to the crane's hydraulic system for the counterweight lifting gear.

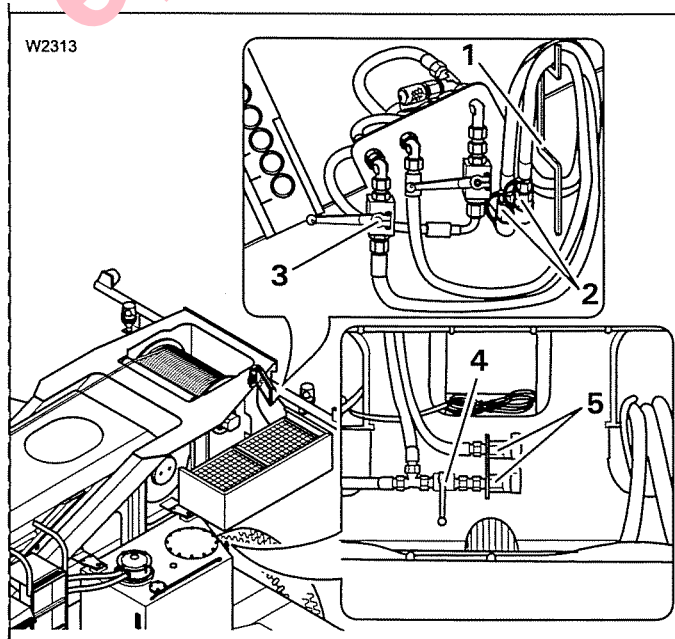
The necessary connections are established with quick couplings. Half couplings which belong together are colour coded.

The connecting cables of the crane's hydraulic system are tightly screwed to the turntable on one side and located on the rear left of the turntable. You can access this area by stepping onto the rear end of the carrier.



Establishing hydraulic connection

- Remove the protective caps from the coupling halves (5) on the rear of the main boom and the connecting lines (2).
- Remove the two connecting lines (2) from the holder (1).
- Connect the connection lines with the corresponding coupling halves (5, observe colour marking!).
- Open the stop cocks next to the main hoist (3) and at the rear on the main boom (4).



Disconnecting the hydraulic connection

- Close stop cocks (3) and (4).
- Detach the connecting lines from the coupling halves (5) on the rear of the main boom.
- Place the protective caps onto the connecting lines (2) and the coupling halves (5) on the rear of the main boom.
- Wind the connection lines (2) back onto the holder (1).

[Buy now](#)

[Grove Truck Crane GMK 5180/6200-1 Auxiliary Single-Sheave Boom Top Operating Instructions PDF](#)

[With Instant Download](#)