

JOHN DEERE

PARTS CATALOG

6059 and 6068 OEM Engines
(ESN -699999) (Torque)

PC2294 (Nov-01)



INTRODUCTION AND CUSTOMER INFORMATION

ACCESSORY CODE PLATE
6059 (5.9 LITER) AND 6068 (6.8 LITER)

T35527 -UN-01JAN94

ACCESSORY CODE PLATE

JOHN DEERE					
CONTROL:		XXXXXXXXXXXXXXXX			
BASIC ENGINE		XXXXX			
OPTION CODES					
XXXX	XXXX	XXXX	XXXX	XXXX	XXXX
XXXX	XXXX	XXXX	XXXX	XXXX	XXXX
XXXX	XXXX	XXXX	XXXX	XXXX	XXXX
XXXX	XXXX	XXXX	XXXX	XXXX	XXXX
XXXX	XXXX	XXXX	XXXX	XXXX	XXXX
XXXX	XXXX	XXXX	XXXX	XXXX	XXXX
XXXX	XXXX	XXXX	XXXX	XXXX	XXXX

T35527

epcatalogs.com

*NOTE: ACCESSORIES NOT SOLD BY JOHN DEERE WILL BE INDICATED ON THE CODE PLATE WITH THE DESIGNATION "OO." THE ORIGINAL EQUIPMENT MANUFACTURER WILL BE RESPONSIBLE FOR WARRANTY SERVICE ON THIS CATEGORY OF ACCESSORY.

OPTION CODES

YOUR ENGINE IS EQUIPPED WITH OPTIONAL EQUIPMENT. EACH OPTION IS CATALOGED UNDER AN OPTION CODE NUMBER WHICH IS LISTED AT THE TOP OF THE PAGE BETWEEN THE PAGE HEADING AND THE EXPLODED VIEW.

TO THE CUSTOMER

THE PART NUMBERS IN THIS PARTS CATALOG WERE CORRECT AT THE TIME YOUR MACHINE WAS MANUFACTURED. IT IS OUR POLICY TO CONSTANTLY IMPROVE OUR MACHINES AND, THEREFORE, PART NUMBERS MAY CHANGE. WHEN ORDERING PARTS, VERIFY PART NUMBERS THROUGH YOUR DEALER'S CATALOG WHICH IS UP-TO-DATE.

(SPECIFICATIONS AND DESIGN SUBJECT TO CHANGE WITHOUT NOTICE.)

SERIAL NUMBER LISTING INFORMATION

SERIAL NUMBER INFORMATION IS LISTED TO SHOW ON WHICH MACHINES EACH PART CAN BE USED; FOR EXAMPLE:

- THE PART CAN BE USED ON ALL MACHINES.
- 000000- THE PART CAN BE USED ON ALL MACHINES BEGINNING WITH THE SERIAL NUMBER LISTED.
- 000000 THE PART CAN BE USED ON ALL MACHINES UP TO AND INCLUDING THE SERIAL NUMBER LISTED.
- 000000-000000 THE PART CAN BE USED ON ALL MACHINES BETWEEN AND INCLUDING THE SERIAL NUMBERS LISTED.

WHEN XXXXXX'S ARE LISTED IN PLACE OF A SERIAL NUMBER, A SERIAL NUMBER CHANGE WAS MADE BUT THE EXACT SERIAL NUMBER WAS NOT AVAILABLE WHEN THE CATALOG WAS PRODUCED.

DIRECTION ARROW

ARROWS ARE USED WITH ILLUSTRATIONS TO INDICATE THE FRONT OF THE ENGINE. "RIGHT-HAND" AND "LEFT-HAND" SIDES ARE DETERMINED BY STANDING AT THE DRIVE OR PTO END AND FACING THE ENGINE.

BOX-ENCLOSED ILLUSTRATIONS

A KEY NUMBER, SHOWN IN THE PARTS LIST, IS ASSIGNED TO A BOX ENCLOSING ALL PARTS SOLD AS A SERVICE ASSEMBLY.

BOLT AND CAP SCREW STRENGTH IDENTIFICATION

BOLTS AND CAP SCREWS REQUIRED TO HAVE HIGH-STRENGTH QUALITIES EQUIVALENT TO SAE GRADE 8 ARE IDENTIFIED THROUGHOUT THIS CATALOG BY THE DESCRIPTION HS SAE 8. ALL STANDARD BOLTS AND CAP SCREWS ARE SAE GRADE 5 OR LOWER.

COMPLETE GOODS LISTINGS

COMPLETE GOODS ARE LISTED IN BOLD FACE TYPE. ORDER SEPARATELY. DO NOT INCLUDE ON REPLACEMENT PARTS ORDER.

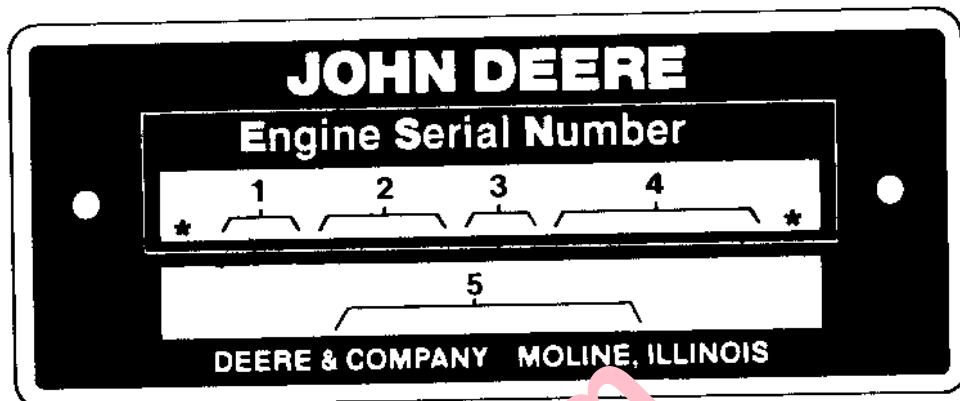
SI UNITS OF MEASURE

METRIC DIMENSIONS ARE GIVEN, WHERE APPLICABLE, THROUGHOUT THIS PARTS CATALOG.

ENGINE SERIAL NUMBER PLATE

TP8011

-UN-01JAN94



- | | |
|--|---|
| 1. DESIGNATES ENGINE MANUFACTURER | JOHN DEERE DUBUQUE WORKS |
| 2. DESIGNATES NUMBER OF CYLINDERS AND LITERS | 59 (5.9 LITER)
68 (6.8 LITER) |
| 3. DESIGNATES FUEL TYPE OR SPECIAL CONDITION | DF NON-TURBOCHARGED DIESEL ENGINE
TF TURBOCHARGED DIESEL ENGINE |
| 4. DESIGNATES ENGINE SERIAL NUMBER | 123456 |
| 5. DESIGNATES THE ENGINE APPLICATION AND FACTORY USER. | 6059DF001
6059TF001
6059TF002
6059TF003
6059TF004
6068DF001
6068TF001 |

[Buy now](#)

[John Deere 6059, 6068 OEM Engine And Accessories Parts Catalog PDF
With Instant Download](#)