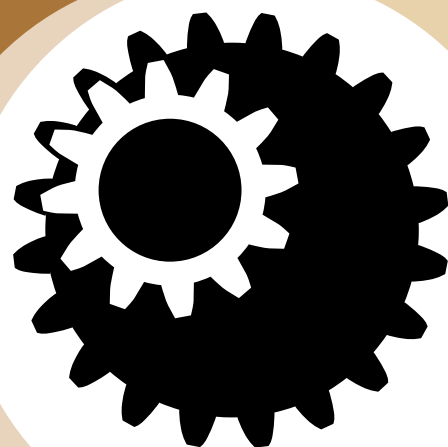


219 Series Power Units

(Dubuque)

epcatalogs.com
PARTS
CATALOG



Deere Power Systems Group
PC1172 (Mar-99)
LITHO IN U.S.A. (REVISED)



INTRODUCTION AND CUSTOMER INFORMATION TO THE CUSTOMER

THE PART NUMBERS IN THIS PARTS CATALOG WERE CORRECT AT THE TIME YOUR CATALOG WAS PUBLISHED. IT IS OUR POLICY TO CONSTANTLY IMPROVE OUR MACHINES AND, THEREFORE, PART NUMBERS MAY CHANGE. WHEN ORDERING PARTS, VERIFY PART NUMBERS THROUGH YOUR DEALER'S MICROFICHE WHICH IS UP-TO-DATE.

(SPECIFICATIONS AND DESIGN SUBJECT TO CHANGE WITHOUT NOTICE.)

POWER UNIT SERIAL NUMBERS

EACH 219 POWER UNIT HAS ITS OWN INDIVIDUAL SERIAL NUMBER. THE POWER UNIT SERIAL NUMBER PLATE IS LOCATED NEAR THE FUEL PUMP ON THE RIGHT HAND SIDE OF THE CYLINDER BLOCK.

ENGINE SERIAL NUMBER PLATE

(ENGINE SERIAL NO. 010001-185199) (MANUFACTURED 1964-1970)

T18014 -UN-01JAN94

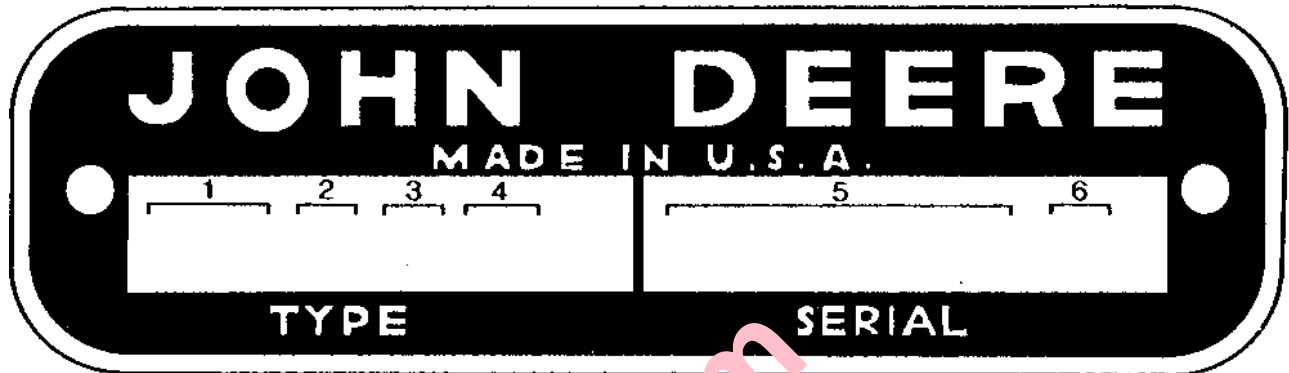


1. THE FIRST LETTER DESIGNATES THE ENGINE. M - ENGINE
2. THIS NUMBER DESIGNATES THE SERIES. 5 - 219
3. THIS NUMBER DESIGNATES THE SERIES. 3 - DIESEL
4. THE LETTER DESIGNATES THE USING FACTORY. H - EAST MOLINE WORKS
5. THE LETTER DESIGNATES THE ENGINE VARIATION. A - INITIAL DESIGN APPLICATION. C - FIRST VARIATION
6. THESE SIX DIGITS DESIGNATE THE PORTION OF THE POWER UNIT SERIAL NUMBER SHOWN IN THE SERIAL NUMBER COLUMN OF THIS CATALOG.
7. THIS LETTER DESIGNATES THE MANUFACTURER T - JOHN DEERE DUBUQUE WORKS OF THE POWER UNIT.

ENGINE SERIAL NUMBER PLATE
(ENGINE SERIAL NO. 185200-621172) (MANUFACTURED 1970-1983)

TP8133

-UN-01JAN94



TP8133

1. THIS NUMBER DESIGNATES THE NUMBER OF CYLINDERS. 4 - FOUR CYLINDERS
2. THESE NUMBERS DESIGNATE THE CUBIC INCH DISPLACEMENT. 219 - 219 CUBIC INCH (3588 CM3)
3. THIS LETTER DESIGNATES THE FUEL TYPE OF ENGINE. D - DIESEL
G - GASOLINE
4. THIS LETTER DESIGNATES THE MANUFACTURING FACTORY. H - EAST MOLINE
N - DES MOINES WORKS
5. THE DASH IS USED FOR SEPARATION.
6. THESE NUMBERS DESIGNATE THE ENGINE VERSION: INITIAL DESIGN
02 - FIRST VARIATION
7. THESE SIX NUMBERS DESIGNATE THE PORTION OF THE POWER UNIT SERIAL NUMBER SHOWN IN THE SERIAL NUMBER COLUMN OF THIS CATALOG UNLESS OTHERWISE SPECIFIED.

MODEL 219 ENGINE USED ON JOHN DEERE COMBINES AND COTTON PICKERS

ENGINE DESIGNATION	FUEL	MACHINE USED ON	COMBINE, SEPARATOR OR COTTON PICKER SERIAL NO.
HA-219-D	DIESEL	3300 COMBINE	(-1700)
HC-219-D	DIESEL	4400 COMBINE	(-3300)
219 DN-01	DIESEL	499 COTTON PICKER	(-1200)
219 DH-01	DIESEL	3300 COMBINE	(1701-3000)
219 DH-02	DIESEL	4400 COMBINE	(3301-6500)
219 DH-03	DIESEL	3300 COMBINE*	(3001-150000)
219 GH-01	GASOLINE	3300 COMBINE*	(3001-150000)
219 GN-01	GASOLINE	499 COTTON PICKER	(-1200)

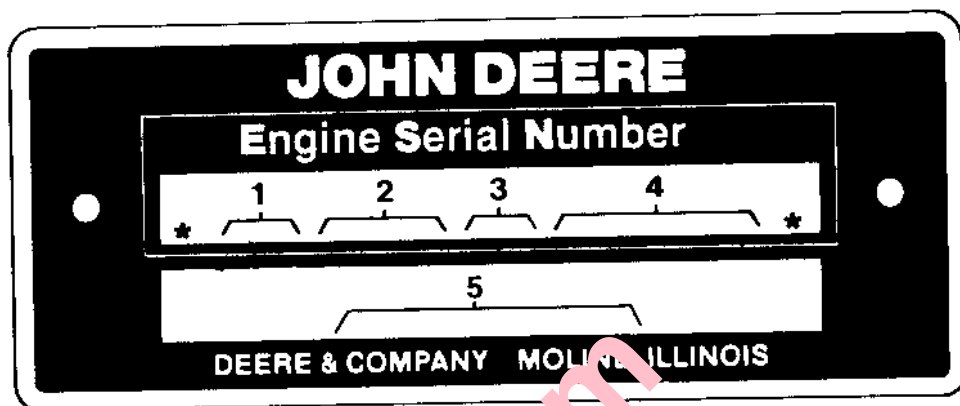
*NOTE: FOR ENGINE SERVICE PARTS FOR 3300 COMBINES BUILT AFTER SERIAL NUMBER 150000, REFER TO PC-1163.

ENGINE SERIAL NUMBER PLATE

(ENGINE SERIAL NO. 100001-) (MANUFACTURED 1983-)

TP8011

-UN-01JAN94



1. DESIGNATES NUMBER OF CYLINDERS AND CUBIC INCHES (3 588 CM3)
2. DESIGNATES THE FUEL. DF - NATURALLY ASPIRATED DIESEL
3. DESIGNATES THE FACTORY USER. T - JOHN DEERE DUBUQUE WORKS
4. DESIGNATES THE VERSION. 01 - BEGINNING
5. DESIGNATES ENGINE SERIAL NUMBER. 123456
6. DESIGNATES THE MANUFACTURER. T - JOHN DEERE DUBUQUE WORKS

SERIAL NUMBER LISTING INFORMATION

SERIAL NUMBER INFORMATION IS LISTED TO SHOW ON WHICH MACHINES EACH PART CAN BE USED; FOR EXAMPLE:

- THE PART CAN BE USED ON ALL MACHINES.
- 000000- THE PART CAN BE USED ON ALL MACHINES BEGINNING WITH THE SERIAL NUMBER LISTED.
- 000000 THE PART CAN BE USED ON ALL MACHINES UP TO AND INCLUDING THE SERIAL NUMBER LISTED.
- 000000-000000 THE PART CAN BE USED ON ALL MACHINES BETWEEN AND INCLUDING THE SERIAL NUMBERS LISTED.

WHEN XXXXXX'S ARE LISTED IN PLACE OF A SERIAL NUMBER, A SERIAL NUMBER CHANGE WAS MADE BUT THE EXACT SERIAL NUMBER WAS NOT AVAILABLE WHEN THE CATALOG WAS PRODUCED.

DIRECTION ARROW

ARROWS ARE USED WITH ILLUSTRATIONS TO INDICATE THE FRONT OF THE UNIT. "RIGHT-HAND" AND "LEFT-HAND" SIDES ARE DETERMINED BY FACING IN THE DIRECTION OF MACHINE FORWARD TRAVEL.

BOX-ENCLOSED ILLUSTRATIONS

A KEY NUMBER, SHOWN IN THE PARTS LIST, IS ASSIGNED TO A BOX ENCLOSING ALL PARTS SOLD AS A SERVICE ASSEMBLY.

BOLT AND CAP SCREW STRENGTH IDENTIFICATION

BOLTS AND CAP SCREWS REQUIRED TO HAVE HIGH-STRENGTH QUALITIES EQUIVALENT TO SAE GRADE 8 ARE IDENTIFIED THROUGHOUT THIS CATALOG BY THE DESCRIPTION HS SAE 8. ALL STANDARD BOLTS AND CAP SCREWS ARE SAE GRADE 5 OR LOWER.

COMPLETE GOODS LISTINGS

COMPLETE GOODS ARE LISTED IN BOLD FACE TYPE. ORDER SEPARATELY. DO NOT INCLUDE ON REPLACEMENT PARTS ORDER.

SI UNITS OF MEASURE

METRIC DIMENSIONS ARE GIVEN, WHERE APPLICABLE, THROUGHOUT THIS PARTS CATALOG.

CHANGE INDICATOR LINE

CHANGES AFFECTING THE ORDERING OF PARTS ARE IDENTIFIED BY VERTICAL LINES MARKED IN THE LEFT-HAND MARGIN OF REVISED PARTS LISTING IMAGES. A LINE IS ALSO AT THE LEFT-HAND EDGE OF THE SAME PART NUMBER IN THE NUMERICAL INDEX TO SHOW THE LOCATION OF REVISED INFORMATION.

[Buy now](#)

[John Deere 219 Series Power Units Parts Catalog PDF](#)

[With Instant Download](#)