

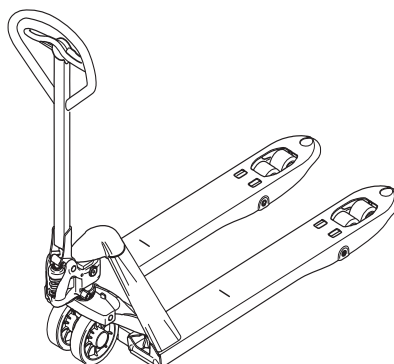
## AM 2200

01.06 -

(D) Betriebsanleitung	(F) Käyttöohjeet
(GB) Operating instructions	(P) Manual de utilização
(F) Instructions de service	(GR) Οδηγίες λειτουργίας
(NL) Gebruiksaanwijzing	(CZ) Návod k obsluze
(E) Instrucciones de servicio	(H) Használati utasítás
(I) Istruzioni di funzionamento	(PL) Instrukcji obsługi
(DK) Driftsanvisning	(SLO) Navodilo za uporabo
(N) Gebruiksaanvisning	(SK) Návod na obsluhu
(S) Driftsanvisning	(RUS) Инструкция по эксплуатации
(R) İşletme Kılavuzu	(LV) Lietošanas instrukcija
(EST) Kasutusjuhend	(LT) Vartojimo instrukcija
(RO) Instrucțiunile de exploatare	(CN) 操作说明

51029189

07.07



**JUNGHEINRICH**

# Foreword

The present ORIGINAL OPERATING INSTRUCTIONS are designed to provide sufficient instruction for the safe operation of the industrial truck. The information is provided clearly and concisely. The chapters are arranged by letter. Each chapter starts with page 1. The page identification consists of a chapter letter and a page number.

For example: Page B 2 is the second page in chapter B.

The operating instructions detail different truck models. When operating and servicing the truck, make sure that the instructions apply to your truck model.

Safety instructions and important explanations are indicated by the following graphics:



Used before safety instructions which must be observed to avoid danger to personnel.



Used before notices which must be observed to avoid material damage.



Used before notices and explanations.



Used to indicate standard equipment.



Used to indicate optional equipment.

Our trucks are subject to ongoing development. Jungheinrich reserves the right to alter the design, equipment and technical features of the truck. No guarantee of particular features of the truck should therefore be inferred from the present operating instructions.

## Copyright

Copyright of these operating instructions remains with *JUNGHEINRICH AG*.

Jungheinrich Aktiengesellschaft

Am Stadtrand 35  
22047 Hamburg - GERMANY

Telephone: +49 (0) 40/6948-0

[www.jungheinrich.com](http://www.jungheinrich.com)

## A Correct Application

The truck described in the present operating instructions is an industrial truck designed for lifting and transporting loads.

It must be used, operated and serviced in accordance with the present instructions. All other types of use lie beyond the scope of application and can result in damage to personnel, the truck or property. In particular, avoid overloading the truck with loads which are too heavy or placed on one side. The maximum permissible load is stated on the truck's data plate. The industrial truck must not be used in fire or explosion endangered areas, or areas threatened by corrosion or excessive dust.

The owner must ensure that the truck is used only for the purpose for which it is intended and that there is no danger to life and limb of the user or third parties. The owner must ensure that all truck users have read and understood these operating instructions.



Failure to comply with the operating instructions shall invalidate the warranty. The same applies if improper work is carried out on the truck by the customer or third parties without the permission of the manufacturer's customer service department.

The attachment or installation of additional equipment affecting the truck's functionality requires the written approval of the manufacturer.

The driver is responsible for the truck during the time it is in use. Do not carry or lift other people. Report any damage and sundry defects to the truck immediately to your supervisor.

The operator must make sure that the load is in a satisfactory condition. Do not carry loads unless they are positioned safely and carefully. Use suitable precautions to prevent parts of the load from tipping or falling down.

## B Truck Description

### 1 Application

The vehicle is a pallet truck, designed for transporting goods on level surfaces. Open bottom pallets or pallets with transverse boards can be lifted beyond the load wheel area. The capacity is shown on the data plate and on the data capacity plate Qmax.

### 2 Assemblies, Application Conditions, Data Plate

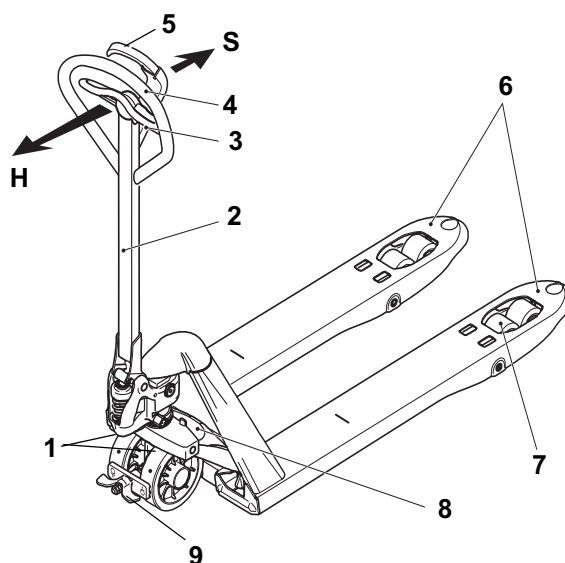
Operating temperature: from -10°C to +50°C

Ambient lighting: min. 50 Lux

Item	Description
1	Steer wheels
2	Tiller
3	"Lift/lower forks" handle
4	Handle
5	Tiller parking brake
6	Load handler
7	Load wheels
8	Data plate
9	Foot parking brake

#### Data Plate

- 1: Type
- 2: Option
- 3: Serial no.
- 4: Year of manufacture
- 5: Rated capacity
- 6: Net weight
- 7: Manufacturer



## C Operation

### 1 Starting up the truck



Before the truck can be commissioned, operated or a load lifted, the driver must ensure that there is nobody within the hazardous area.

Inspect the entire truck (especially the wheels and the load handler) for visible signs of damage.

### 1.1 Travel, Steering, Braking, Lifting, Lowering

#### Travel

- The truck can be pulled or pushed from the tiller (2) handle (4).

#### Steering

- Move the tiller (2) to the left or right, to a range of approx. 115°.

#### Braking

In an emergency you can brake the truck by lowering the load.

- Press handle (3) in direction "S" to lower the load.



Braking with the tiller parking brake

- Apply the tiller parking brake (5) until the brake engages.
- Gently pull the lever to brake the truck during travel.



Braking with the foot parking brake

- Push the foot parking brake (9) in direction "A". The brake shoe acts on the wheels and blocks them.
- To release the brake (9) depress the left side of the pedal in direction "B", the spring pushes the brake shoe back, releasing the wheels.



Never attempt to apply the brake manually.

#### Lifting



Before collecting a load, the driver must ensure that it is correctly palletised and that the capacity of the truck is not exceeded.

Do not lift long loads at an angle.

- Fully insert the truck and the load handler underneath the load.
- Press handle (3) in direction "H".
- Lift the load fork by moving the tiller (2) up and down, until the desired lifting height is achieved.



#### Fast lift



Rapid lift is effective for loads of up to 120 kg. For pallets over 120 kg, rapid lift is applied for the distance under the pallet. As soon as the load is raised, the truck switches to normal lift.

#### Lowering

- Press handle (3) in direction "S" to lower the load.
- Set the handle (3) to the "neutral" position.



When moving a laden truck, the handle (3) must be in the "neutral" (4) position.

### 1.2 Parking the truck securely



Do not park the truck on slopes and always lower the forks fully.

When transporting the truck on a lorry or trailer, it must always be loaded correctly with chocks applied to the wheels.

## D Industrial Truck Maintenance



Only original spare parts have been certified by our quality assurance department. To ensure safe and reliable operation of the truck, use only the manufacturer's spare parts. Used parts, oils and fuels must be disposed of in accordance with the relevant environmental protection regulations. For oil changes, contact the manufacturer's specialist department.

Industrial trucks must only be serviced and repaired by the manufacturer's trained personnel. Do not use flammable liquids to clean the industrial truck. When using a power cleaner or degreasing agents always proceed with caution as the grease is diluted on permanently lubricated bearings and can damage them. Subsequent lubrication is not possible.



The oil level must be checked every 4000 service hours, or at least every 2 years (type HV 32 only): Capacity: 0.36 litres Lubricate the joints with an MoS2 lubricant.



The pump delivery flow can be interrupted if the pallet truck is set aside for repairs or maintenance work. The truck must be fully lifted without load before it is used again to restore the pump to priming.

epcatalogs.com

[Buy now](#)

[JUNGHEINRICH AM 2200 Operating Instruction PDF](#)

[With Instant Download](#)