

Tigercat®

TIRE PRESSURE MONITORING SYSTEM



ISSUE 1.1, OCTOBER 2022

70226AENG

epcatalogs.com

CONTENTS

COMPUTER.....	5
HOME SCREEN	
TIRE PRESSURE DISPLAY.....	6
INFORMATION MENU	
TIRE PRESSURE MONITOR MENU.....	6
PRESSURE ADJUSTMENTS.....	7
MACHINE ORIENTATION.....	5
MAIN MENU	
ADJUST MENU.....	8
TIRE PRESSURE MONITORING SYSTEM.....	8
TPMS DISPLAY PARAMETERS.....	8
TIRE PRESSURE MONITOR LAMPS.....	5
SENSOR INSTALLATION PROCEDURE.....	11
TIRE PRESSURE ADJUSTMENTS.....	7
TIRE PRESSURE MONITORING SYSTEM.....	4
PRESSURE SENSORS.....	4
SENSOR INSTALLATION PROCEDURE.....	11

TIRE PRESSURE MONITORING SYSTEM (TPMS) OVERVIEW

The optional tire pressure monitoring system is comprised of wireless pressure sensors installed on each tire which independently transmit data to the computer. The tire pressure, temperature, and any applicable faults appear on the computer display. The operator can set the computer to display various alert messages based on customizable parameters.

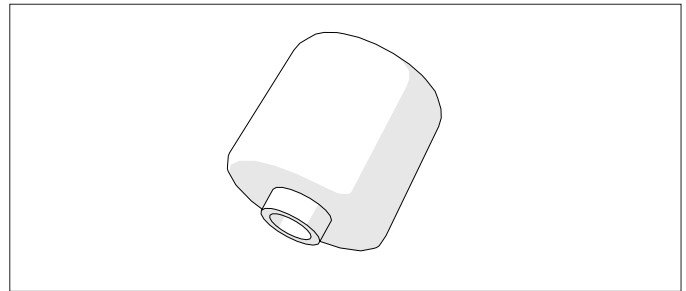
The following alert messages are available:

- Tire Pressure High
- Tire Pressure Low
- Tire Pressure Critically High
- Tire Pressure Critically Low
- Tire Temperature High
- Tire Leaking
- Tire Sensor Battery Fault
- Tire Sensor Missing

Refer to COMPUTER—MAIN MENU—ADJUST MENU—TIRE PRESSURE MONITORING SYSTEM for more information on alert message customization.

For correct operation of the tire pressure monitoring system, ensure that the computer is programmed with the recommended tire pressure for the brand and size of tire installed on the machine and that the tires are inflated to the recommended tire pressure prior to sensor installation. Refer to TIRE PRESSURES in SECTION 3 of the OPERATOR'S MANUAL for recommended tire pressures for this application.

PRESSURE SENSORS



The sensors detect tire pressure and temperature. The sensors read data whether the machine is moving or stationary at the following intervals:

After Installing—Sensors transmit data within 60 seconds of being installed onto the valve stem of a tire.






During Normal Conditions—When the tire temperatures are below 65.5°C (150°F), sensors read data every 7 seconds and transmit data to the computer every 5 minutes.

During Operating Conditions—When the tire temperatures are above 65.5°C (150°F), sensors read data every 5 seconds and transmit data to the computer every 3.5 minutes.

During Fault Conditions—When any of the customized fault conditions are met, the sensors override the normal update time and transmit to the computer immediately. The computer display shows which tire has the fault.

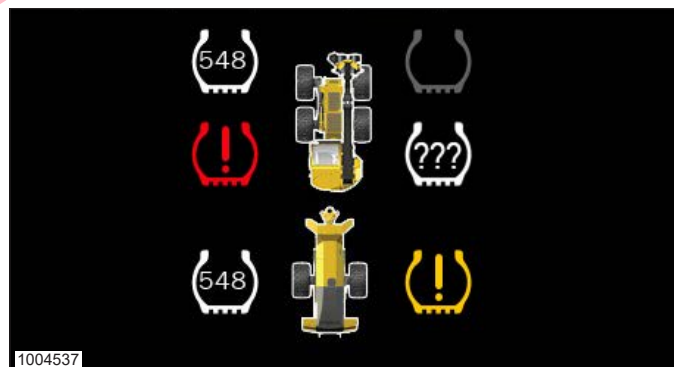
After Uninstalling—Sensors transmit data when removed from the valve stem of a tire.

COMPUTER**TIRE PRESSURE MONITOR LAMPS**

Lamp	Status	Lamp Meaning
	Grey	Unused—No sensor is installed on the tire or the sensor has not yet been synced to the computer.
	White	Active—A sensor is installed on the tire. The current tire pressure displays in the lamp.
	White	Missing—The sensor was active but the computer is not currently receiving a signal from it. The sensor may display as missing in the following situations: <ul style="list-style-type: none"> • The sensor is attempting to connect to the receiver after machine start-up. This may take up to 20 minutes. • The sensor was removed from the tire. • The signal from the sensor has been interrupted.
	Yellow, Flashing	Alert—The tire has one of the following faults: <ul style="list-style-type: none"> • Tire Pressure High • Tire Pressure Low
	Red, Flashing	Critical—The tire has one of the following faults: <ul style="list-style-type: none"> • Tire Pressure Critically High • Tire Pressure Critically Low • Tire Temperature High • Tire Leaking Air • Tire Sensor Battery Fault

MACHINE ORIENTATION**SKIDDERS**

The top of the screen represents the front of the machine. The number and position of tires shown varies by machine configuration.

HARVESTERS

The top of the screen represents the front of the machine. The number and position of tires shown varies by machine configuration. The machine icon can be used as reference for tire location.

FORWARDERS

The top of the screen represents the front of the machine based on which direction the seat is facing. When the seat rotates, the tire display adjusts so that the tires in front of the operator always display at the top of the screen.

[Buy now](#)

[Tigercat Tire Pressure Monitoring System PDF](#)

[With Instant Download](#)