

Instructions for Parts Books

The heading at the top of the page will be the same for the picture of the parts as it is for the page with the part numbers.

Definition of column headings on part number pages:

REF.No → The number referring to the part on the picture page of the parts book.

Part No. → The number assigned to this part at the time of printing the parts book.

Description → Discription of part.

Q'ty → Quantity of part used on that page.

S.No. → Serial number range of the equipment that this part will fit.

>= Your serial number should be greater than or equal to the number shown.

<= Your serial number should be lesser than or equal to the serial number shown.

I/C → Interchangeability of part shown.

↔ The part shown will work for the older and later serial number.

The part shown is not interchangeable with the other serial number.

← new for old

→ old for new

Remarks → Notes about this particular part. Sometimes this may say except [FR] or [CA]

Note about Country Codes:

The parts books we use in the United States of America may also contain information about a part that would be different in another country. It is important that you are aware of the country codes in some instances.

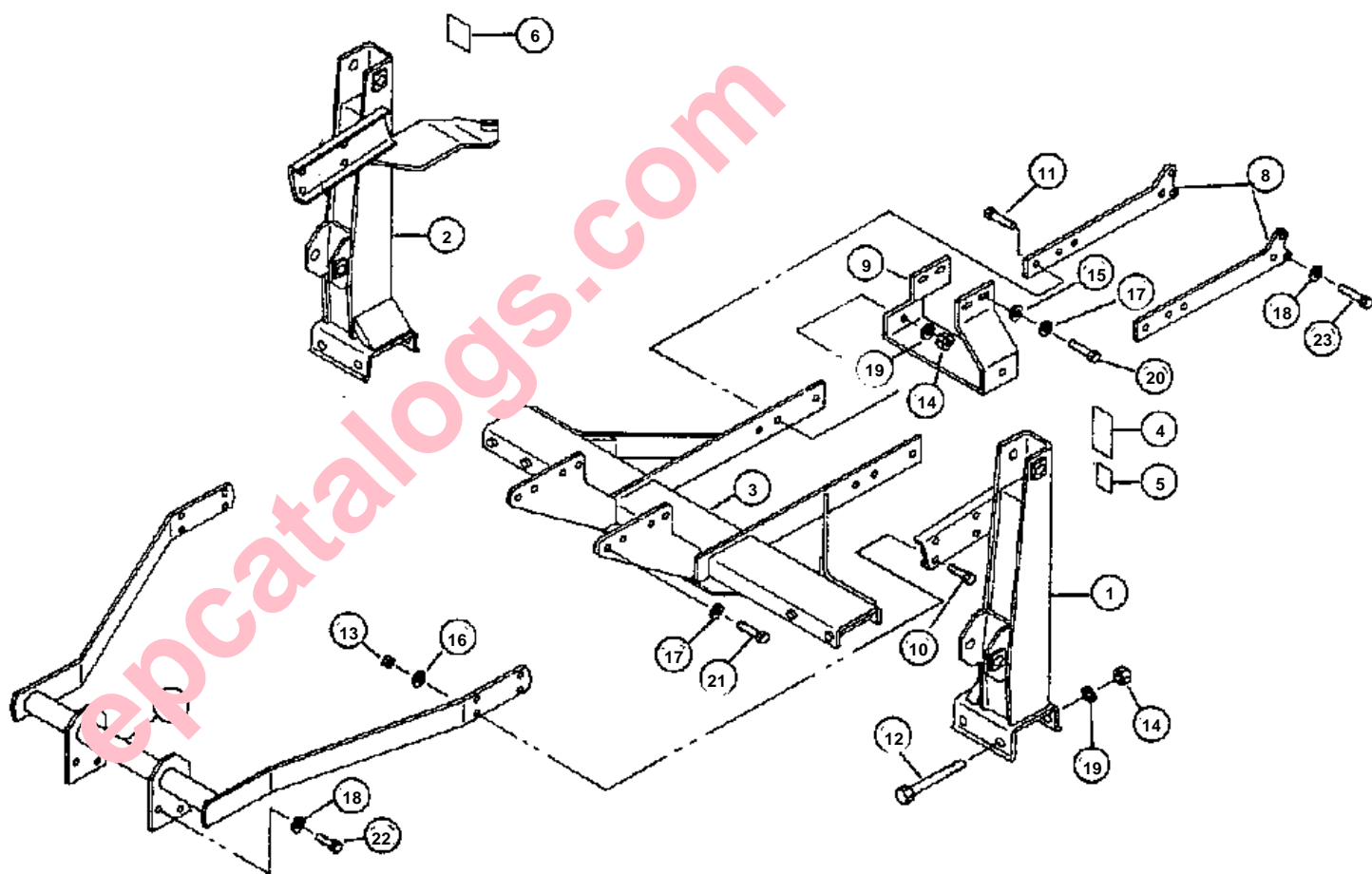
Symbol	Country
A	United States of America
CA	Canada
FR	France
GR	Greece
PO	Portugal
AU	Australia

If the remarks column says for example EXCEPT [FR] this part works in all countries except France. That means it will work here in the USA.

Kubota B1630 Loader

Part No.		Book
01002	B1633 SUB-FRAME & COMPONENTS	100Z0002
01003	B1634 SUB-FRAME & COMPONENTS	100Z0002
01004	B1635 SUB-FRAME & COMPONENTS	100Z0002
01005	B1639 SUB-FRAME & COMPONENTS	100Z0002
01009	B1633&39 TRACTOR HYDRAULICS	100Z0002
01010	B1634&35 TRACTOR HYDRAULICS	100Z0002
01013	B1630 40 & 40A LIFT FRAMES & COMPONENTS	100Z0002
01015	B1630 40 & 40A SINGLE LEVER CONTROL	100Z0002
01017	B1630 40 & 40A CONTROL VALVE	100Z0002
01018	PRESSURE RELIEF CARTRIDGE	100Z0002
01019	LOADER HYDRAULICS B1630 <=22004921 B1640/A <=24005472	100Z0002
01020	LOADER HYDRAULICS B1630 =>22004922 B1640/A =>24005473	100Z0002
01022	LIFT CYLINDER B1630 <=2004921 B1640/A <=244005472	100Z0002
01023	BUCKET CYLINDER B1630 <=22004921 B1640/A <=2005472	100Z0002
01024	LIFT CYLINDER B1630=>22004922 B1640/A =>24005473	100Z0002
01025	BUCKET CYLINDER B1630=>22004922 B1640/A=>24005473	100Z0002

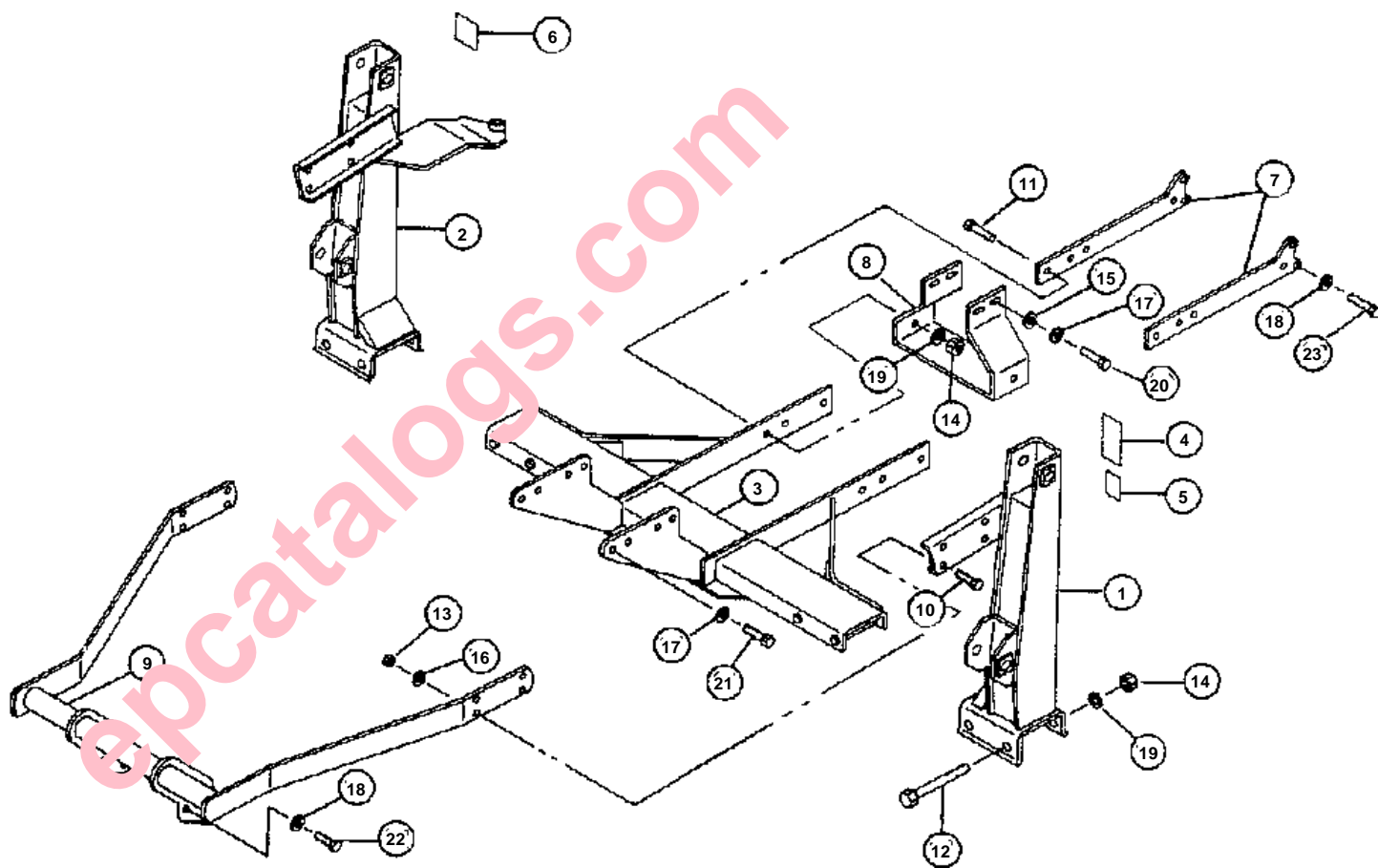
epcatalogs.com



**B1633 SUB-FRAME & COMPONENTS**

↔ Interchangeable; ≠ not interchangeable; ← new for old; → old for new

REF.No	Part No.	Description	Q'ty	S.No.	I/C	REMARKS	Weight (kgf)	Weight (lb)
1	70050-01594	UPRIGHT	1				0	0
2	70050-01596	UPRIGHT	1				0	0
3	70050-01638	SUB-FRAME ASSY	1				0	0
4	70050-01664	LABEL CAUTION	1				0	0
5	70050-01595	LABEL WARNING	1				0	0
6	70050-01606	LABEL CONTROL	1				0	0
7	70050-02191	FRONT BRACKET	1				0	0
8	70050-01646	REAR MOUNT	2				0	0
9	70050-01647	BELLY BRACE	1				0	0
10	70000-74028	OBTAIN LOCALLY	8				0	0
11	70000-74028	OBTAIN LOCALLY	4				0	0
12	70000-74028	OBTAIN LOCALLY	6				0	0
13	70000-74028	OBTAIN LOCALLY	8				0	0
14	70000-74028	OBTAIN LOCALLY	8				0	0
15	70000-74028	OBTAIN LOCALLY	4				0	0
16	70000-74028	OBTAIN LOCALLY	8				0	0
17	70000-74028	OBTAIN LOCALLY	10				0	0
18	70000-74028	OBTAIN LOCALLY	12				0	0
19	70000-74028	OBTAIN LOCALLY	8				0	0
20	70000-74028	OBTAIN LOCALLY	4				0	0
21	70000-74028	OBTAIN LOCALLY	6				0	0
22	70000-74028	OBTAIN LOCALLY	6				0	0
23	70000-74028	OBTAIN LOCALLY	6				0	0
24	70050-01555	LABEL KIT	1				0	0



[Buy now](#)

[Kubota B1630 Loader Parts Manual PDF](#)

[With Instant Download](#)