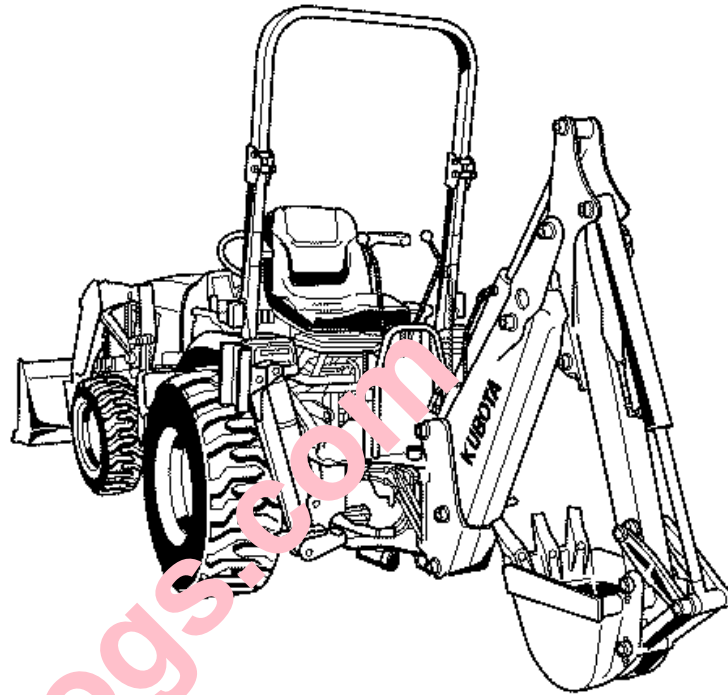


BH65

Figure Num BH65



Instructions for Parts Books

The heading at the top of the page will be the same for the picture of the parts at it is for the page with the part numbers.

Definition of column headings on part number pages:

REF.No → The number referring to the part on the picture page of the parts book.

Part No. → The number assigned to this part at the time of printing the parts book.

Part Name → Description of part.

Q'ty → Quantity of part used on that page.

S.No. → Serial number range of the equipment that this part will fit.

➤= Your serial number should be greater than or equal to the number shown.

➤= Your serial number should be lesser than or equal to the serial number shown.

I/C → Interchangeability of part shown.

= The part shown will work for the older and later serial number.

NI The part shown is not interchangeable with the other serial number.

Remarks → Notes about this particular part. Sometimes this may say except [FR] or [CA]

Note about Country Codes

The parts books we use in the United States of America may also contain information about a part that would be

different in another country. It is important that you are aware of the country codes in some instances.

Symbol Country

A United States of America

CA Canada

FR France

GR Greece

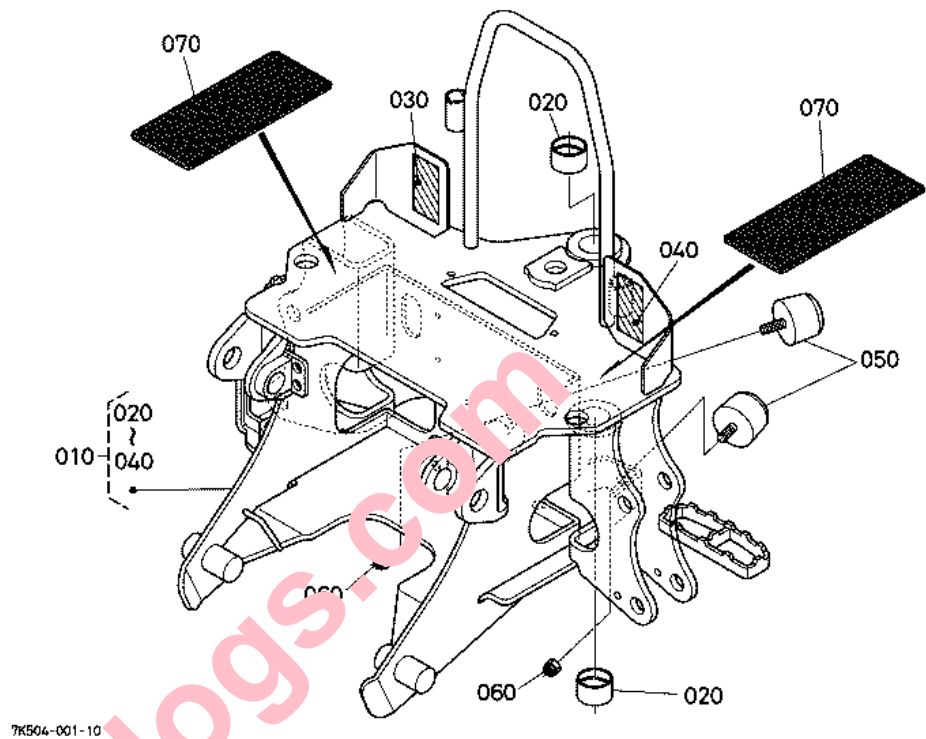
PO Portugal

AU Australia

If the remarks column says for example EXCEPT [FR] this part works in all countries except France. That means it will work here in the USA.

MAIN FRAME

Figure Num 01B001



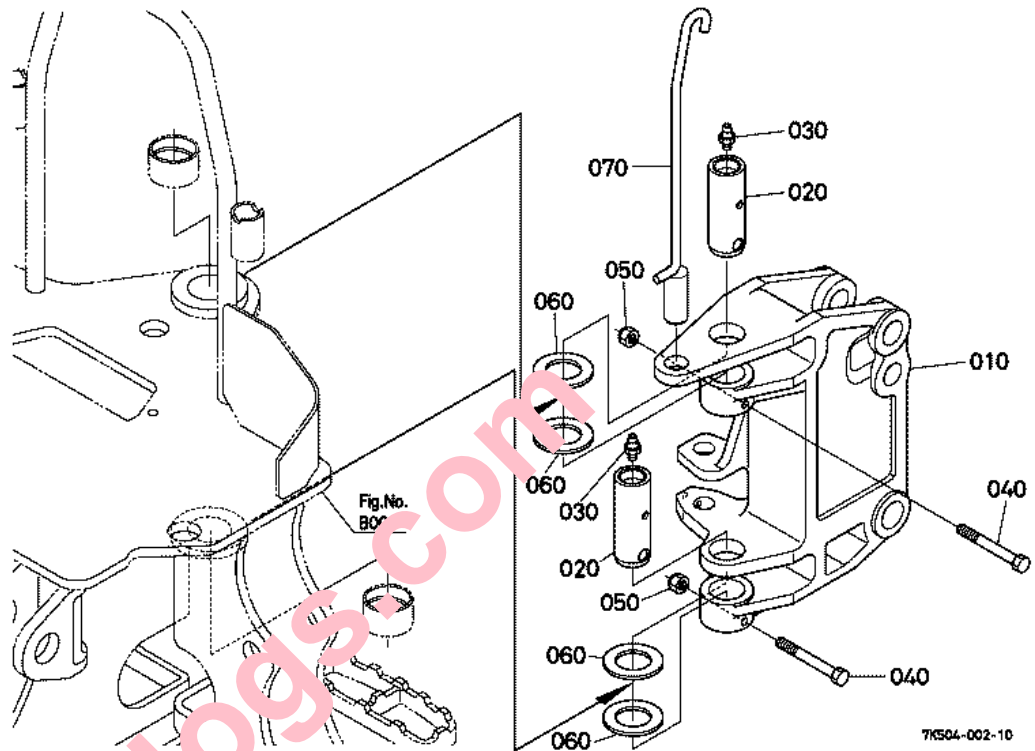
MAIN FRAME

Ref	Part Number	Part Name	Qty	IC	S/N	Lbs	Remarks
010	7K504-90110	FRAME MAIN(LABEL)	1			0	
020	7K522-12250	BUSH	2			0	35*31
030	75590-75270	LABEL IMPORTANT	1			0.015	
040	75595-75240	LABEL 2 WARNING	1			0.015	
050	7K522-11520	CUSHION	2			0	
060	02572-50120	NUT LOCK	2			0.030	
070	7K501-11510	MAT	2			0	

epcatalogs.com

SWING FRAME

Figure Num 01B010



SWING FRAME

Ref	Part Number	Part Name	Qty	IC	S/N	Lbs	Remarks
010	7K504-12110	FRAME SWING	1			0	
020	7K522-12210	PIN	2			0	35*98
030	75599-81531	FITTING GREASE	2			0.015	1/8-27NPT
040	01173-51075	BOLT	2			0.103	
050	02574-50100	NUT LOCK	2			0.015	
060	7K522-12260	COLLAR	4			0	
070	7K504-14212	PIN 1 LOCK	1			0	

[Buy now](#)

[Kubota BH65 Backhoe Parts Manual PDF](#)

[With Instant Download](#)