



DAILY

REPAIR MANUAL

MECHANICAL

ELECTRICAL

ELECTRONIC

epcatalogs.com

IVECO



This publication describes the characteristics, the data, the correct methodology of the repairs that can be made on each individual component of the vehicle.

By complying with the instructions supplied and using the specific tools it is possible to perform any repair intervention correctly, within the specified time frames, while protecting the technicians against incidents.

Before starting any repair work, make sure that all accident prevention devices are ready at hand.

Check and wear the protective personal equipment provided for by the safety standards: goggles, helmet, gloves, shoes.

Check the efficiency of all processing, lifting and transport tools before using them.

The data contained in this publication might fail to reflect the latest changes which the Manufacturer may introduce at any time, for technical or sales purposes, or to meet the requirements of local legislation.

Copy, even partial, of text and drawings is forbidden.

Publication Edited by:
IVECO S.p.A.
T.C.O. - B.U. Customer Service
Lungo Stura Lazio, 15/19
10156 Torino (Italy)

Printed **603.43.351** - 3rd Ed. 2002

Produced by:



B.U. TECHNICAL PUBLISHING
C.so Svizzera, 185
10149 Torino (Italy)

SPECIAL REMARKS

The workshop manuals for mechanical parts have been divided into Sections, each of which has a number and its relevant contents are indicated in the General Specifications. Each section features a main Unit (e.g. engine, gears etc.).

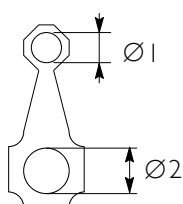
The subjects usually dealt with in each section are:

Technical data table, Driving torques, Equipment, Diagnostic, Removal and Fitting in place, Repair operations.

Where possible, the same sequence of procedures has been followed for easy reference.

Diagrams and symbols have been widely used to give a clearer and more immediate illustration of the subject being dealt with, (see next page) instead of giving descriptions of some operations or procedures.

Example



Ø 1 = housing for connecting rod small end bush

Ø 2 = housing for connecting rod bearings



Tighten to torque
Tighten to torque +
angular value

Furthermore, within each section, every heading or sub-heading concerning the operations to be carried out is preceded by a six digit number. This number is the Product Code that is to be found in the repair operation described in the REPAIR TIMES CHARTS and in the FAULT CODES.

For quick reference the indication of how to read this code is described below (see the Repair time charts also).

Product Code:



PRODUCT



UNIT



SUB-ASSEMBLY
COMPONENT

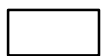
Example:

Product 50 = Frame;

Product 52 = Axles;

Product 53 = Gears etc.

Unit Code:



PRODUCT



UNIT



SUB-ASSEMBLY
COMPONENT

Figures three and four identify the ASSEMBLY within the PRODUCT

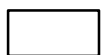
Example:

Product 50 = Frame;

Unit 01 = Chassis;

Unit 02 = Bumpers etc .

Sub-assembly Code:



PRODUCT



UNIT



SUB-ASSEMBLY
COMPONENT

Example:

Product 50 = Frame;

Unit 01 = Chassis;

Sub-assembly 40 = Chassis cross members etc.

Graphs and symbols

	Removal Disconnection
	Refitting Connection
	Removal Disassembly
	Fitting in place Assembly
	Tighten to torque
	Tighten to torque + angle value
	Press or caulk
	Regulation Adjustment
	Warning Note
	Visual inspection Fitting position check
	Measurement Value to find Check
	Equipment
	Surface for machining Machine finish
	Interference Strained assembly
	Thickness Clearance
	Lubrication Damp Grease
	Sealant Adhesive
	Air bleeding

	Intake
	Exhaust
	Operation
ϱ	Compression ratio
	Tolerance Weight difference
	Rolling torque
	Replacement Original spare parts
	Rotation
	Angle Angular value
	Preload
	Number of revolutions
	Temperature
	Pressure
$>$	Oversized Higher than.... Maximum, peak
$<$	Undersized Less than.... Minimum
	Selection Classes Oversizing
	Temperature < 0° Cold Winter
	Temperature > 0° Hot Summer

DAILY

Print 603.43.351 – 3rd edition
3rd Edition - February 2002

UPDATE DATA

Section	Description	Page	Revision date

[Buy now](#)

[Iveco Daily Mechanical Electrical Electronic Repair Manual PDF](#)
[With Instant Download](#)