

310SK, 410K Backhoe Loaders With TMC Repair Manual

(PIN: 1T0310TK__E219607—)

(PIN: 1T0410TK__E219607—)

REPAIR TECHNICAL MANUAL

310SK, 410K Backhoe Loaders With TMC

(PIN: 1T0310TK__E219607—)

(PIN: 1T0410TK__E219607—)

TM12415 4MAY19 (ENGLISH)


**Worldwide Construction
And Forestry Division**
PRINTED IN U.S.A.

Introduction

Foreword

This manual is written for an experienced technician. Essential tools required in performing certain service work are identified in this manual and are recommended for use.

Live with safety: Read the safety messages in the introduction of this manual and the cautions presented throughout the text of the manual.

 This is the safety-alert symbol. When this symbol is seen on the machine or in this manual, be alert for the potential of personal injury.

Technical manuals are divided in two parts: repair and operation and tests. Repair sections tell how to repair the components. Operation and test sections help to quickly identify the majority of routine failures quickly.

Information is organized in groups for the various components requiring service instruction. At the beginning of each group are summary listings of all applicable essential tools, service equipment and tools, other materials needed to do the job, service parts kits, specifications, wear tolerances, and torque values.

Technical manuals are concise guides for specific machines. They are on-the-job guides containing only the vital information needed for diagnosis, analysis, testing, and repair.

Fundamental service information is available from other sources covering basic theory of operation, fundamentals of troubleshooting, general maintenance, and basic type of failures and their causes.

MM16284,00026ED -19-17SEP18-1/1

Manual Identification—READ THIS FIRST!

IMPORTANT: Use only supporting manuals designated for your specific machine. If incorrect manual is chosen, improper service may occur. Verify product identification number (PIN) when choosing the correct manual.

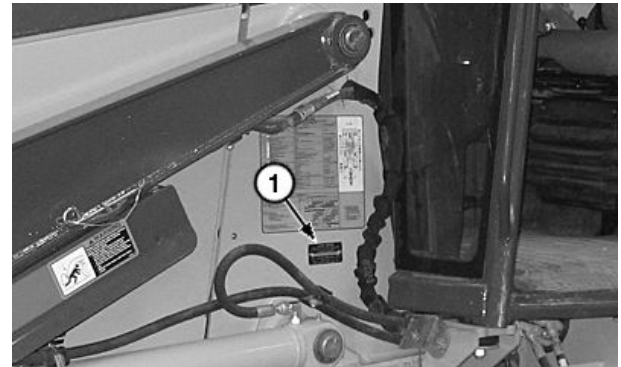
Choosing the Correct Supporting Manuals

John Deere backhoe loaders are available in different machine configurations based on the various markets into which they are sold. Different supporting manuals exist for different machine configurations.

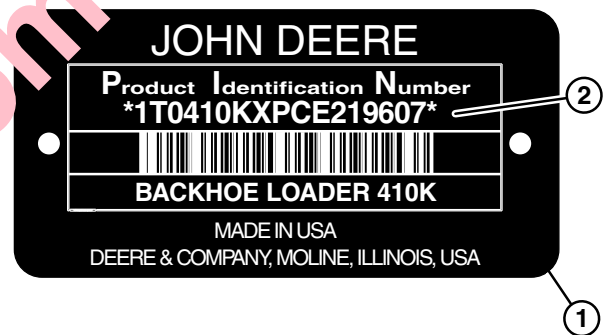
When necessary, product identification numbers are listed on the front covers of backhoe loader manuals. These numbers are used to identify the correct supporting manual for your machine.

Product Identification Number

The product identification number (PIN) plate (1) is located on the left-side of machine on the loader frame. Each machine has a 17-character PIN (2) shown on PIN plate.



PIN Plate Location



Example of PIN Plate

1— PIN Plate

2— 17-Character PIN

TX1107874A —UN—08FEB12

TX1108673 —UN—20FEB12

Continued on next page

JS93577,00000B3 -19-02JUL12-1/2

The PIN identifies the producing factory, machine model number, machine option, year of manufacture, engine emission level, and machine serial number.

17-Character PIN Examples													
(3)			(4)			(5)	(4)	(6)	(7)	(8)	(9)		
1	T	0	3	1	0	T	K			E	2	1	9
1	T	0	4	1	0	T	K			E	2	1	9

- **(3)—World Code**—Identifies location where machine is manufactured.
- **(4)—Machine Model Identifier**—Identifies model number.
- **(5)—Machine Option Code**—Identifies which major machine option is equipped. This character will change from one machine to another.
- **(6)—Check Letter**—This is a random character assigned by the factory. This is not used in machine identification.
- **(7)—Manufacturing Year Code**—Identifies year of machine manufacture.
- **(8)—Engine Emission Code**—Represents engine emission certification.
- **(9)—Machine Serial Number**—Identifies machine serial number. This character will change from one machine to another.

The following is an example for a 410K TMC machine that meets Interim Tier 4/Stage III B emission levels:

1T0410TK_E219607

1T0	World Code (manufacturing location)
1DW	Davenport Works
1T8	Thibodaux Works
1T0	Dubuque Works
410_K	Machine Model Identifier
T	Machine Option Code
X	Base Machine
S	Super Duty
E	Easy Power (EP)
T	Total Machine Control (TMC) Configuration
—	Check Letter (variable)
—	Manufacturing Year Code (variable)
C	2012
D	2013
F	2014
F	2015
C	2016
E	Engine Emission Code
C	Tier 2 and Stage II
D	Tier 3 and Stage III A
E	Interim Tier 4 and Stage III B
F	Tier 4
G	Interim Tier 4 and Stage III A (19-56 kW)
219607	Machine Serial Number

JS93577,00000B3 -19-02JUL12-2/2

Contents

Section 00—General Information

- Group 0001—Safety
- Group 0003—Torque Values

Section 01—Wheels

- Group 0110—Powered or Non-Powered Wheels and Fastenings

Section 02—Axles and Suspension Systems

- Group 0225—Input Drive Shafts and U-Joints
- Group 0230—Non-Powered Wheel Axles
- Group 0240—Powered Wheel Axle (MFWD)
- Group 0250—Axle Shaft, Bearings, and Reduction Gears

Section 03—Transmission

- Group 0300—Removal and Installation
- Group 0315—Controls Linkage
- Group 0350—Gear, Shafts, and Power Shift Clutches
- Group 0360—Hydraulic System

Section 04—Engine

- Group 0400—Removal and Installation

Section 05—Engine Auxiliary Systems

- Group 0505—Cold Weather Starting Aids
- Group 0510—Cooling Systems
- Group 0515—Speed Controls
- Group 0520—Intake System
- Group 0530—Exhaust Systems
- Group 0560—External Fuel Supply Systems

Section 06—Torque Converter

- Group 0651—Torque Converter, Gears, and Shaft

Section 08—Steering System

- Group 0860—Hydraulic System

Section 09—Service Brakes

- Group 0911—Active Elements
- Group 1060—Hydraulic System

Section 11—Park Brake

- Group 1111—Active Elements

Section 17—Frame or Supporting Structure

- Group 1740—Frame Installation
- Group 1749—Chassis Weights

Section 18—Operator's Station

- Group 1800—Removal and Installation
- Group 1810—Operator Enclosure
- Group 1821—Seat and Seat Belt
- Group 1830—Heating and Air Conditioning

Section 19—Sheet Metal and Styling

- Group 1910—Hood or Engine Enclosure
- Group 1913—Miscellaneous Shields
- Group 1921—Grille and Grille Housing

Section 20—Safety and Convenience

- Group 2001—Radio
- Group 2004—Horn and Warning Devices

Section 21—Main Hydraulic System

- Group 2160—Hydraulic System

Section 31—Loader

- Group 3100—Loader
- Group 3102—Bucket
- Group 3104—Attachment Coupler
- Group 3115—Control Linkage
- Group 3160—Hydraulic System

Section 33—Backhoe

- Group 3302—Bucket
- Group 3315—Control Linkage
- Group 3340—Frames
- Group 3360—Hydraulic System

Section 38—Grapple

- Group 3800—Backhoe Hydraulic Thumb
- Group 3860—Backhoe Hydraulic Thumb Cylinder

Section 99—Dealer Fabricated Tools

- Group 9900—Dealer Fabricated Tools

Original Instructions. All information, illustrations and specifications in this manual are based on the latest information available at the time of publication. The right is reserved to make changes at any time without notice.

COPYRIGHT © 2019
DEERE & COMPANY
Moline, Illinois
All rights reserved.
A John Deere ILLUSTRATION™ Manual
Previous Editions
Copyright © 2012, 2013, 2014, 2015, 2016, 2017, 2018

[Buy now](#)

[John Deere 310SK, 410K Backhoe Loader with TMC Repair Manual PDF
With Instant Download](#)