

epcatalogs.com

3394 Tractor

Operators Manual

9-11290

Reprinted





This symbol means ATTENTION! BECOME ALERT! YOUR SAFETY IS INVOLVED. The message that follows the symbol contains important information about your safety. Carefully read the message. Make sure you fully understand the causes of possible injury or death.

SB001

IF THIS MACHINE IS USED BY AN EMPLOYEE, IS LOANED, OR IS RENTED, MAKE SURE THAT THE OPERATOR UNDERSTANDS THE TWO INSTRUCTIONS BELOW.

BEFORE THE OPERATOR STARTS THE ENGINE:

1. GIVE INSTRUCTIONS TO THE OPERATOR ON SAFE AND CORRECT USE OF THE MACHINE.
2. MAKE SURE THE OPERATOR READS AND UNDERSTANDS THE OPERATOR'S MANUAL FOR THIS MACHINE.



WARNING

IMPROPER OPERATION OF THIS MACHINE CAN CAUSE INJURY OR DEATH.

BEFORE STARTING THE ENGINE, DO THE FOLLOWING:

1. READ THE OPERATOR'S MANUAL.
2. READ ALL SAFETY DECALS ON THE MACHINE.
3. CLEAR THE AREA OF OTHER PERSONS.

LEARN AND PRACTICE SAFE USE OF MACHINE CONTROLS IN A SAFE, CLEAR AREA BEFORE YOU OPERATE THIS MACHINE ON A JOB SITE.

It is your responsibility to observe pertinent laws and regulations and to follow manufacturer's instructions on machine operation and maintenance.

See your Authorized Case dealer for additional operator's manuals, parts catalogs, and service manuals.

TO THE OWNER OF A CASE INTERNATIONAL TRACTOR

Use this manual as your guide. If you follow the instructions given in this manual, your Case International tractor will work well for many years.

Your Dealer can give you assistance with Case Company made parts and persons with special training that know the best methods of repair and maintenance for your tractor.

Call your Dealer if you need any assistance or information.

Your Authorized Case Dealer



Figure 1

NOTE: When you are in the tractor seat looking forward, the right hand and left hand of the tractor are the same as your right hand and left hand.

SERIAL NUMBERS

When ordering parts or when requesting information or assistance always give the model and serial numbers of your tractor.

Write the model and serial numbers of your tractor on the lines below.

1. TRACTOR MODEL NUMBER _____

2. PRODUCT IDENTIFICATION NUMBER _____

3. ENGINE SERIAL NUMBER _____

4. TRANSMISSION SERIAL NUMBER _____

5. CAB SERIAL NUMBER _____

6. AXLE SERIAL NUMBER _____

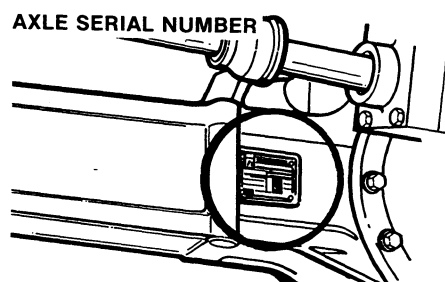
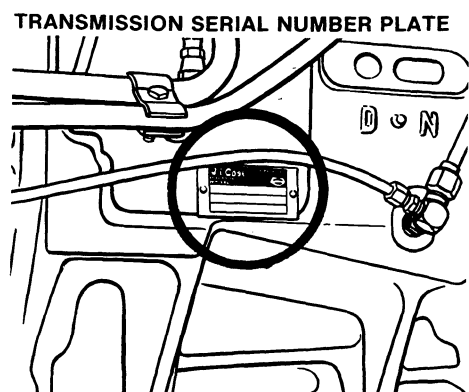
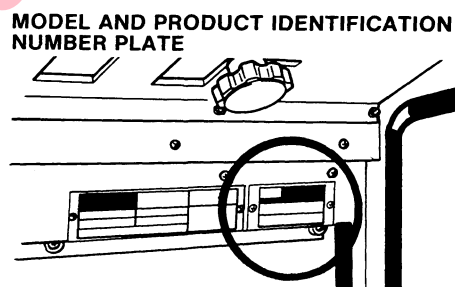
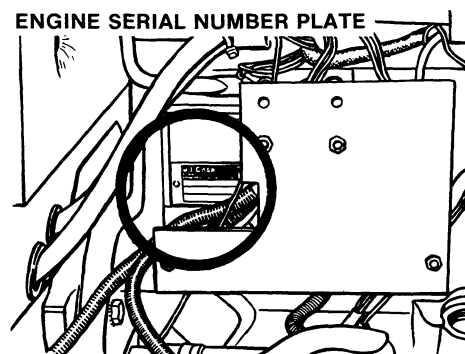
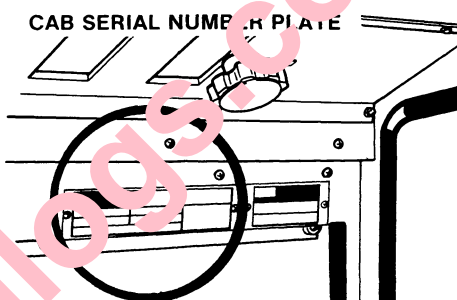


Figure 2

TABLE OF CONTENTS

TO THE OWNER	I	OPERATING CONTROLS	52-79
SERIAL NUMBERS	II	Front Console	52,55
TABLE OF CONTENTS	III-IV	Foot Pedals	54,55
SAFETY	V-XV	Side Console	56-61
Safety Rules	V	Steering Column Tilt	62
Before Starting	V-VI	Telescopic Steering Column	63
Operation	VII-XII	Cab Headliner Controls	64,65
Service	XIII-XV	Ventilation Control Settings	65
HAND SIGNALS	XVI-XVII	Cab Air Flow Control	66
DECALS	XVIII-XXII	Cab Defroster Control	66
ENGINE SPECIFICATIONS	1,2	Cab Air Flow Arrangements	67-69
GENERAL SPECIFICATIONS	3-6	Air Conditioner Operation	70
TRAVEL SPEEDS	7-9	Cab Door Lock	70
MEASUREMENTS AND WEIGHTS	10	Rear View Mirrors	71
ROPS MACHINE WEIGHT	10	Cab Window Lever	71
TIRE AND WHEEL SPECIFICATIONS	11-13	Operators Seat	72,73
Tire Inflation Specifications	12,13	Seat Belts	74
Tire Load Capacity	13	Amber Warning Lamp - Direction	
TIRE SIZE COMBINATIONS	14	Turn Signals & SMV Symbol	75,76
FRONT WHEEL TREAD POSITIONS	15	Implement Warning Lamps	
WHEEL MOUNTING TORQUES	16	& SMV Symbol	77
INSTALLATION OF		Auxiliary Circuit Socket	78
STEERING STOPS	16,17	Hydraulic Stop Valve	79
REAR WHEEL TREAD POSITIONS	18,19	Hydraulic Tank Water Trap	79
DUAL REAR WHEEL		DEFENDING INSTRUCTIONS	80-143
TREAD POSITIONS	21,22	Pre-In Procedure	80,81
DIESEL FUEL SPECIFICATIONS	24	Before Starting the Engine	82
FUEL CONDITIONER	25	Mowing	83
DIGITAL INSTRUMENT CLUSTER	26-50	How to Transport the Tractor	83
English/Metric Mode Selection	27	Starting Procedure	84,85
Engine Hourmeter	27	Stopping the Engine	86
Turn Signal Indicator	27	Cold Temperature Operation	87,88
Service Monitors and Fair Indicators	28-34	Cold Temperature Starting	89-92
Function Buttons	35-39	Coolant Heater	89
Engine Run Function	35	Ether Starting Fluid	90,91
PTO Function	35	Starting Fluid	
Time Function	36	Container Replacement	92
Area/Hour Function	37	Differential Lock	93
Area Done Function	37	Power Shift Transmission	94,95
Wheel Slip Function	38,39	Power Takeoff	96-98
Ground Speed Function	39	Operating PTO	96
Instrument Cluster Programming	40-48	Guards	97
Programming Tire Code Number	41-46	Operating Safety	98
Standard Program Code Number	41	Drawbar	99-101
Dynamic Tire Code Number	42,43	Safety Chain	102
Static Tire Code Number	44-46	Three Point Hitch System	103
Programming Attachment Width	47,48	Hitch System Adjustments	104-107
Automatic Shutdown System	49,50	Lift Links and Upper Link	104,105
TRUE GROUND SPEED SENSOR	51	Sway Blocks	106
		Extendable Draft Arms	106
		Anti-Sway Chain	106
		Lowering Speed Regulator Valve	107
		Draft Arm Mechanical Flotation	107

[Buy now](#)

[Case 3394 Tractor PDF Operator's Manual](#)

[With Instant Download](#)