

epcatalogs.com

**2394
Tractor**

Operators Manual

9-9432





This symbol means ATTENTION! BECOME ALERT! YOUR SAFETY IS INVOLVED. The message that follows the symbol contains important information about your safety. Carefully read the message. Make sure you fully understand the causes of possible injury or death.

SB001

IF THIS MACHINE IS USED BY AN EMPLOYEE, IS LOANED, OR IS RENTED, MAKE SURE THAT THE OPERATOR UNDERSTANDS THE TWO INSTRUCTIONS BELOW.

BEFORE THE OPERATOR STARTS THE ENGINE:

1. GIVE INSTRUCTIONS TO THE OPERATOR ON SAFE AND CORRECT USE OF THE MACHINE.
2. MAKE SURE THE OPERATOR READS AND UNDERSTANDS THE OPERATOR'S MANUAL FOR THIS MACHINE.



WARNING

IMPROPER OPERATION OF THIS MACHINE CAN CAUSE INJURY OR DEATH.

BEFORE STARTING THE ENGINE, DO THE FOLLOWING:

1. READ THE OPERATOR'S MANUAL.
2. READ ALL SAFETY DECALS ON THE MACHINE.
3. CLEAR THE AREA OF OTHER PERSONS.

LEARN AND PRACTICE SAFE USE OF MACHINE CONTROLS IN A SAFE, CLEAR AREA BEFORE YOU OPERATE THIS MACHINE ON A JOB SITE.

It is your responsibility to observe pertinent laws and regulations and to follow manufacturer's instructions on machine operation and maintenance.

See your Authorized Case dealer for additional operator's manuals, parts catalogs, and service manuals.

TO THE OWNER OF A CASE INTERNATIONAL TRACTOR

Use this manual as your guide. If you follow the instructions given in this manual, your Case International Tractor will work well for many years.

Your Dealer can give you assistance with Case Company made parts and persons with special training that know the best methods of repair and maintenance for your tractor.

Call your Dealer if you need any assistance or information.

Your Authorized Case Dealer



Figure 1

NOTE: When you are in the tractor seat looking forward, the right hand and left hand of the tractor are the same as your right hand and left hand.

SERIAL NUMBERS

When ordering parts or when requesting information or assistance always give the model and serial numbers of your tractor.

Write the model and serial numbers of your tractor on the lines below.

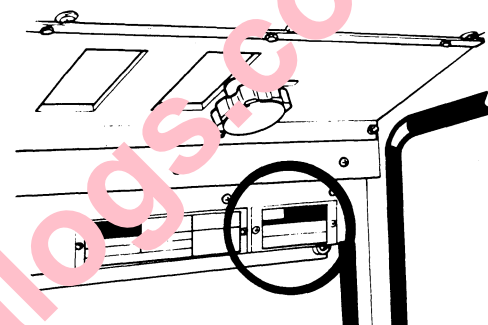
1. TRACTOR MODEL NUMBER _____

2. PRODUCT IDENTIFICATION NUMBER _____

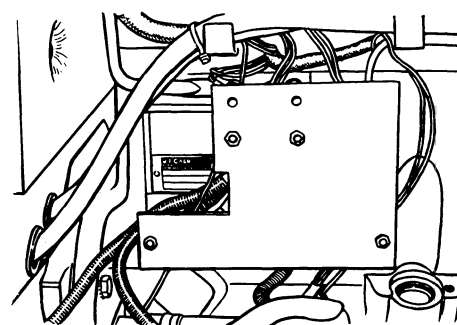
3. ENGINE SERIAL NUMBER _____

4. TRANSMISSION SERIAL NUMBER _____

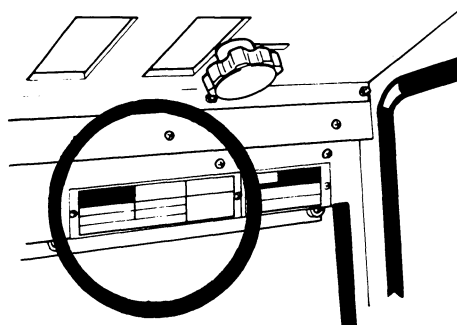
5. CAB SERIAL NUMBER _____



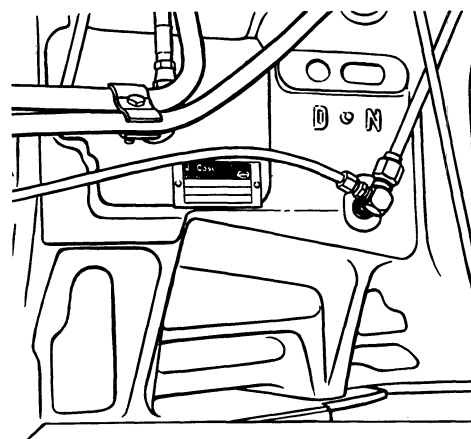
MODEL AND PRODUCT IDENTIFICATION
NUMBER PLATE



ENGINE SERIAL NUMBER PLATE



CAB SERIAL NUMBER PLATE



TRANSMISSION SERIAL NUMBER PLATE

Figure 2

TABLE OF CONTENTS

TO THE OWNER	I	DIGITAL INSTRUMENT CLUSTER (Cont'd)	
SERIAL NUMBERS	II	Instrument Cluster Programming	50-58
TABLE OF CONTENTS	III,IV	Programming Tire Code Number ..	51-56
SAFETY	V-XV	Standard Program Code Number ..	51
Safety Rules	V	Dynamic Tire Code Number	52,53
Before Starting	V,VI	Static Tire Code Number	54-56
Operation	VII-XII	Programming Attachment Width ..	57,58
Service	XIII-XV	Automatic Shutdown System	59,60
HAND SIGNALS	XVI,XVII	TRUE GROUND SPEED SENSOR	61
DECALS	XVIII-XXII	OPERATING CONTROLS	62-91
ENGINE SPECIFICATIONS	1,2	Front Console	62-65
GENERAL SPECIFICATIONS	3-5	Foot Pedals	64,65
TRAVEL SPEEDS	6-8	Side Console	66-71
TIRE AND WHEEL SPECIFICATIONS ..	9-11	Steering Column Tilt	72
Tire Inflation Specifications	9,10	Telescopic Steering Column	72
Tire Load Capacity	11	Heater Stop Valve	73
MEASUREMENTS AND WEIGHTS	12,13	Fuel Tank Water Trap	73
ROPS MACHINE WEIGHT	12,13	Rear View Mirrors	74
FRONT WHEEL TREAD POSITIONS	14	Cab Window Lever	74
REAR WHEEL TREAD POSITIONS ...	15-17	Cab Headline Controls	75,76
DUAL REAR WHEEL		Ventilation Control Settings	76
TREAD POSITIONS	18-20	Cab Air Flow Control	77
DIESEL FUEL SPECIFICATIONS	21	Cab Defroster Control	77
FUEL CONDITIONER	22	Cab Air Flow Arrangements	78-80
LUBRICATION	23-35	Air Conditioner Operation	81
Engine Hourmeter	23	Cab Door Lock	81
Lubrication Chart	24,25	Operators Seat	82-85
Engine Lubrication	26-29	Seat Belts	86,87
Engine Oil Level	26	Amber Warning Lamps, Direction	
Engine Oil Change	27	Turn Signals & SMV Symbol	88,89
Engine Oil Filter	28	Implement Warning Lamps &	
Engine Oil Collection	29	SMV Symbol	90
Transmission Lubrication	30	Auxiliary Outlet Socket	91
Trans/Hydraulic Oil Filters	31-33	OPERATING INSTRUCTIONS	92-150
Steering & Brake System Air Removal ..	34	Run-In Procedure	92
Front Wheel Bearings	35	Before Starting the Engine	93
DIGITAL INSTRUMENT CLUSTER ...	36-60	Towing	94
English/Metric Mode Selection	37	How to Transport the Tractor	94
Engine Hourmeter	37	Starting Procedure	95,96
Turn Signal Indicator	37	Stopping the Engine	97
Service Monitors & Bar Indicators ...	38-44	Cold Temperature Operation	98,99
Function Buttons	45-49	Cold Temperature Starting	100-103
Engine RPM Function	45	Coolant Heater	100
PTO RPM Function	45	Ether Starting Fluid	101,102
Timer Function	46	Starting Fluid Container	
Area/Hour Function	47	Replacement	103
Area Done Function	47	Power Shift Transmission	104,105
Wheel Slip Function	48	Differential Lock	106
Ground Speed Function	49	Power Takeoff	107-109
		Operating PTO	107
		Guards	108
		Operating Safety	109

[Buy now](#)

[Case 2394 Tractor PDF Operator's Manual](#)

[With Instant Download](#)