

epcatalogs.com

# **2096 Tractor**

## **Operators Manual**

9-12870

Reprinted





*This symbol means **ATTENTION! BECOME ALERT! YOUR SAFETY IS INVOLVED.** The message that follows the symbol contains important information about your safety. Carefully read the message. Make sure you fully understand the causes of possible injury or death.*

SB001

IF THIS MACHINE IS USED BY AN EMPLOYEE, IS LOANED, OR IS RENTED, MAKE SURE THAT THE OPERATOR UNDERSTANDS THE TWO INSTRUCTIONS BELOW.

BEFORE THE OPERATOR STARTS THE ENGINE:

1. GIVE INSTRUCTIONS TO THE OPERATOR ON SAFE AND CORRECT USE OF THE MACHINE.
2. MAKE SURE THE OPERATOR READS AND UNDERSTANDS THE OPERATOR'S MANUAL FOR THIS MACHINE.



# WARNING

IMPROPER OPERATION OF THIS MACHINE CAN CAUSE INJURY OR DEATH.

BEFORE STARTING THE ENGINE, DO THE FOLLOWING:

1. READ THE OPERATOR'S MANUAL.
2. READ ALL SAFETY DECALS ON THE MACHINE.
3. CLEAR THE AREA OF OTHER PERSONS.

LEARN AND PRACTICE SAFE USE OF MACHINE CONTROLS IN A SAFE, CLEAR AREA BEFORE YOU OPERATE THIS MACHINE ON A JOB SITE.

It is your responsibility to observe pertinent laws and regulations and to follow manufacturer's instructions on machine operation and maintenance.

See your Authorized Case dealer for additional operator's manuals, parts catalogs, and service manuals.

# TO THE OWNER OF A CASE TRACTOR

Use this manual as your guide. If you follow the instructions given in this manual, your Case Tractor will work well for many years.

Your Authorized Case Dealer can give you assistance with J I Case Company made parts and persons with special training that know the best methods of repair and maintenance for your tractor.

Call your Authorized Case Dealer if you need any assistance or information.

***Your Authorized Case Dealer***



**Figure 1**

**NOTE:** *When you are in the tractor seat looking forward, the right hand and left hand of the tractor are the same as your right hand and left hand.*

## SERIAL NUMBERS

When parts or assistance is needed, or when writing to your Authorized Case Dealer, always give this information:

1. Tractor Model Number
2. Product Identification Number
3. Engine Serial Number
4. Transmission Serial Number
5. Cab Serial Number

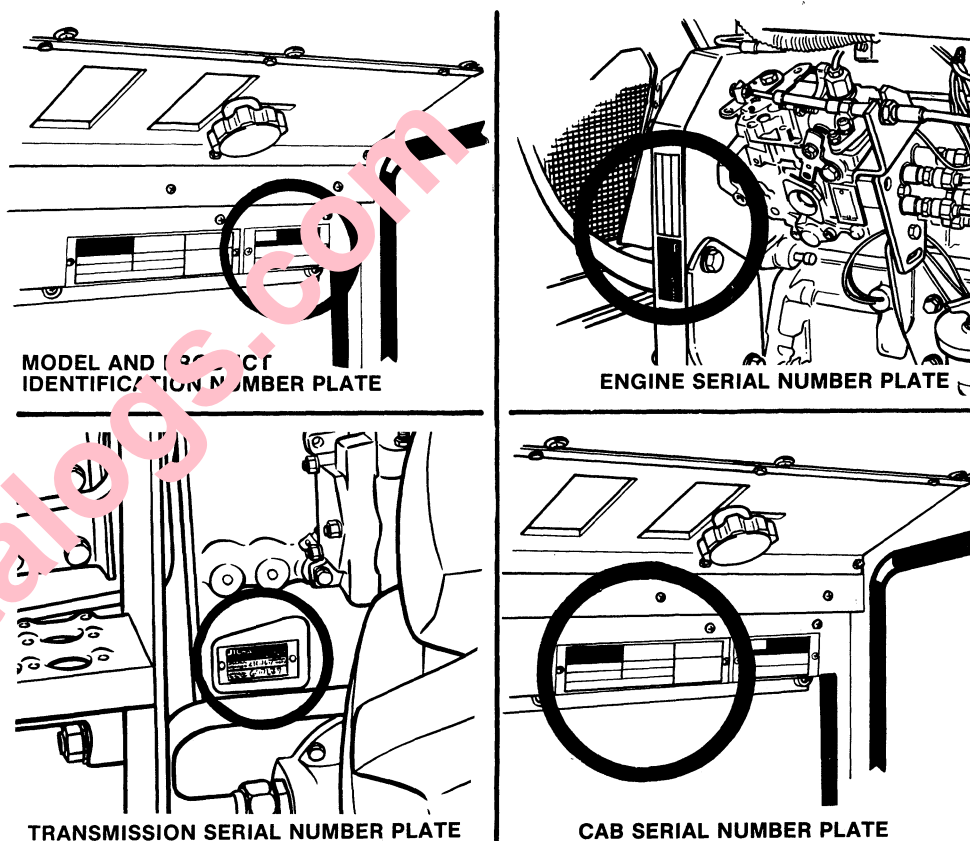


Figure 2

Write the serial numbers of your tractor on the lines below.

**MODEL NUMBER** \_\_\_\_\_

**PRODUCT IDENTIFICATION NUMBER** \_\_\_\_\_

**ENGINE SERIAL NUMBER** \_\_\_\_\_

**TRANSMISSION SERIAL NUMBER** \_\_\_\_\_

**CAB SERIAL NUMBER** \_\_\_\_\_

# TABLE OF CONTENTS

TO THE OWNER .....	I	DIGITAL INSTRUMENT CLUSTER (Cont'd)	
SERIAL NUMBERS .....	II	Timer Function .....	48
SAFETY .....	V-XXVI	Wheel Slip Function .....	49,50
Safety Rules .....	V	Ground Speed Function .....	50
Before Starting .....	V-VI	Area/Hour Function .....	51
Operation .....	VII-XVI	Area Done Function .....	51
Service .....	XVII-XIX	Programming Buttons .....	52
HAND SIGNALS .....	XX-XXI	Programming Tire Size .....	52-57
DECALS .....	XXII-XXVI	Dynamic Tire Code Number .....	53,54
DIESEL ENGINE SPECIFICATIONS .....	1,2	Static Tire Code Number .....	55-57
GENERAL SPECIFICATIONS .....	3-6	Programming Attachment Width .....	58,59
TRAVEL SPEEDS .....	7	Instrument Cluster Functional Checks ..	60
FUEL SPECIFICATIONS .....	8	Automatic Shutdown System .....	61,62
APPROXIMATE OVER ALL		True Ground Speed Sensor .....	63
MEASUREMENTS .....	9,10	Operating Controls .....	64-95
APPROXIMATE TRANSPORT		Steering Console .....	64,65
WEIGHT .....	9,10	Foot Pedals .....	66,67
MAXIMUM GROSS VEHICLE WEIGHT ..	9,10	Operators Console .....	68-73
TIRE AND WHEEL SPECIFICATIONS ..	11-13	Mechanical Front Drive .....	74
Tire Inflation Pressure .....	12,13	Park Brake Control .....	75
Tire Load Capacity .....	13	Steering Column Tilt .....	76
FRONT WHEEL TREAD POSITIONS .....	14	Telescopic Steering Column .....	76
FRONT WHEEL		Heater Stop Valve .....	77
TREAD POSITIONS - MFD .....	15	Fuel Tank Water Trap .....	77
WHEEL MOUNTING TORQUES .....	16	Rear View Mirrors .....	78
INSTALLATION OF		Cab Window Lever .....	78
STEERING STOPS - MFD .....	16,17	Cab Headliner Controls .....	79,80
TIRE SIZE ARRANGEMENTS - MFD ..	18	Cab Air Flow Control .....	81
REAR WHEEL TREAD POSITIONS .....	19	Cab Defroster Control .....	81
DUAL REAR WHEEL		Cab Air Flow Arrangements .....	82-84
TREAD POSITIONS .....	20,21	Air Conditioner Operation .....	85
LUBRICATION .....	22-36	Cab Door Lock .....	85
Engine Hourmeter .....	22	Operators Seat .....	86-89
Engine Lubrication .....	23	Seat Belts .....	90,91
Lubrication Chart .....	24,25	Amber Warning Lamps, Direction	
Engine Lubrication .....	26,27	Turn Signals & SMV Symbol .....	92,93
Engine Oil Filter .....	28	Implement Warning Lamps	
Transmission Lubrication .....	29	& SMV Symbol .....	94
Trans/Hydraulic Oil Filters .....	30-32	Auxiliary Outlet Socket .....	95
Differential Lubrication .....	33	OPERATING INSTRUCTIONS .....	96-155
Planetary Lubrication .....	34	Run-In Procedure .....	96,97
Steering & Brake System Air Removal ..	35	Before Starting the Engine .....	98
Front Wheel Bearings .....	36	Towing .....	99
ALTERNATOR CHARGING SYSTEMS ..	37	How to Transport the Tractor .....	99
DIGITAL INSTRUMENT CLUSTER ..	38-59	Starting Procedure .....	100,101
English/Metric Mode Selection .....	39	Stopping the Engine .....	102
Engine Hourmeter .....	39	Cold Temperature Operation .....	103,104
Turn Signal Indicator .....	39	Cold Temperature Starting .....	105-109
Service Monitors and Bar Indicators ..	40-46	Ether Starting Fluid .....	105,106
Function and Programming Buttons ..	47-52	Starting Fluid	
Engine RPM Function .....	47	Container Replacement .....	107
PTO RPM Function .....	47	Coolant Heater .....	108
		Oil Pan Heater .....	109
		Power Shift Transmission .....	110,111
		Differential Lock .....	112

[Buy now](#)

[Case 2096 Tractor PDF Operator's Manuals](#)

[With Instant Download](#)