

**1170 Tractor
SN 8675001 and After**

Operators Manual

9-2842

Reprinted








THIS SAFETY ALERT SYMBOL INDICATES IMPORTANT SAFETY MESSAGES IN THIS MANUAL. WHEN YOU SEE THIS SYMBOL, CAREFULLY READ THE MESSAGE THAT FOLLOWS AND BE ALERT TO THE POSSIBILITY OF PERSONAL INJURY OR DEATH.

M171B

If Safety Decals on this machine use the words **Danger, Warning or Caution**, which are defined as follows:

- **DANGER:** Indicates an immediate hazardous situation which if not avoided, will result in death or serious injury. The color associated with Danger is RED.
- **WARNING:** Indicates an potentially hazardous situation which if not avoided, will result in serious injury. The color associated with Warning is ORANGE.
- **CAUTION:** Indicates an potentially hazardous situation which if not avoided, may result in minor or moderate injury. It may also be used to alert against unsafe practices. The color associated with Caution is YELLOW.

If Safety Decals on this machine are SO two panel Pictorial, decals are defined as follows:

- The first panel indicates the nature of the hazard.
- The second panel indicates the appropriate avoidance of the hazard.
- Background color is YELLOW.
- Prohibition symbols such as   and  if used, are RED.



WARNING

IMPROPER OPERATION OF THIS MACHINE CAN CAUSE INJURY OR DEATH. BEFORE USING THIS MACHINE, MAKE CERTAIN THAT EVERY OPERATOR:

- Is instructed in safe and proper use of the machine.
- Reads and understands the Manual(s) pertaining to the machine.
- Reads and understands ALL Safety Decals on the machine.
- Clears the area of other persons.
- Learns and practices safe use of machine controls in a safe, clear area before operating this machine on a job site.

It is your responsibility to observe pertinent laws and regulations and follow Case Corporation instructions on machine operation and maintenance.

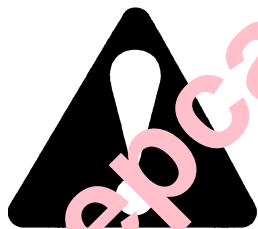
TO THE PURCHASER OF A CASE TRACTOR

The care you give your Case Tractor will greatly determine the satisfaction and service you will obtain from it. Use this manual as your guide. By observing the instructions and suggestions in this manual, your Case Tractor will serve you well for many years.

As an Authorized Case Dealer, we stock Genuine Case Parts, which are manufactured with the same precision and skill as the original equipment. Our factory trained staff is kept well informed on the best methods of servicing Case equipment and is ready and able to help you.

Should you require additional aid or information, contact us.

Your Authorized Case Dealer



**LOOK FOR THIS SYMBOL TO POINT
OUT IMPORTANT SAFETY PRECAUTIONS.
IT MEANS - ATTENTION! BECOME ALERT!
YOUR SAFETY IS INVOLVED.**

**TO INSURE EFFICIENT AND PROMPT SERVICE, PLEASE
FURNISH US WITH THE MODEL, SERIAL, ENGINE, TRANS-
MISSION AND CAB SERIAL NUMBERS OF YOUR TRACTOR
IN ALL CORRESPONDENCE OR CONTACTS.**

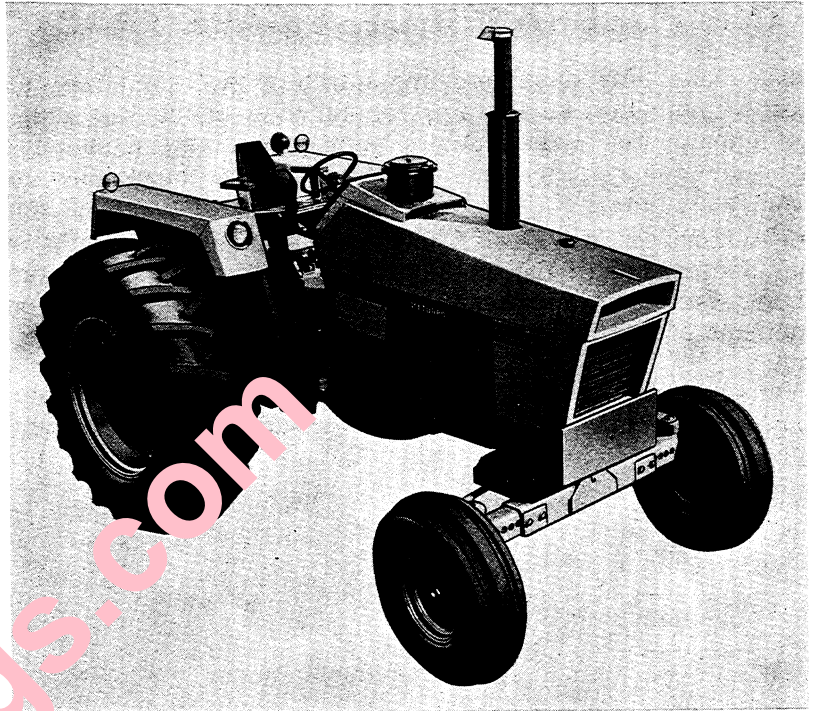


Figure 1

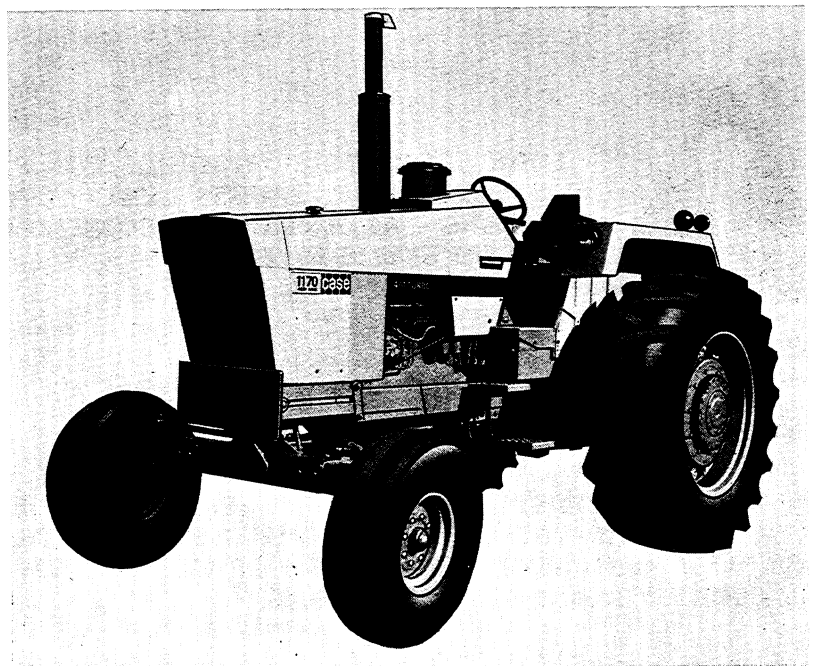


Figure 2

SERIAL NUMBERS

The Model and Serial Numbers are stamped on the number plate located on the outside and lower left hand side of the fire wall assembly, Figure 3. The Engine Serial Number is stamped on a plate fastened to the rear right hand side of the engine block, Figure 4. The transmission Serial Number is stamped on a plate and fastened to the right hand side and to the front of the axle on the transmission housing, Figure 5. The Cab Serial Number is stamped on a plate fastened to the inside right hand support, Figure 6.

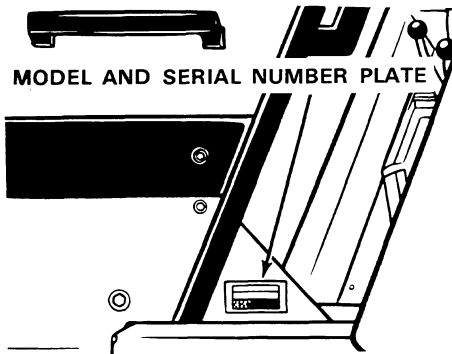


Figure 3

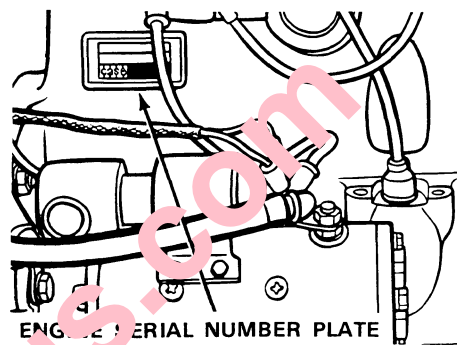


Figure 4

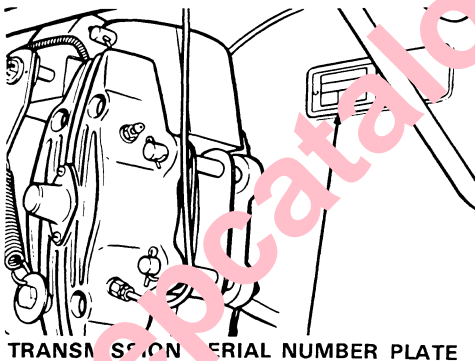


Figure 5

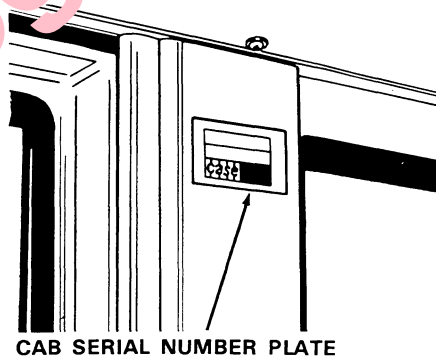


Figure 6

NOTE: The terms "Right Hand" and "Left Hand" whenever used in this manual, apply to the tractor when facing in the direction the tractor will move in forward operation.

For reference, fill in the Serial Numbers of your tractor in the spaces provided below.

Model Designation _____
Tractor Serial Number _____
Engine Serial Number _____
Transmission Serial Number _____
Cab Serial Number _____

[Buy now](#)

[Case 1170 Tractor PDF Operator's Manuals](#)

[With Instant Download](#)