

epcatalogs.com

1170 Tractor

Operators Manual

9-2751



Reprinted



This symbol means ATTENTION! BECOME ALERT! YOUR SAFETY IS INVOLVED. The message that follows the symbol contains important information about your safety. Carefully read the message. Make sure you fully understand the causes of possible injury or death.

SB001

IF THIS MACHINE IS USED BY AN EMPLOYEE, IS LOANED, OR IS RENTED, MAKE SURE THAT THE OPERATOR UNDERSTANDS THE TWO INSTRUCTIONS BELOW.

BEFORE THE OPERATOR STARTS THE ENGINE:

1. GIVE INSTRUCTIONS TO THE OPERATOR ON SAFE AND CORRECT USE OF THE MACHINE.
2. MAKE SURE THE OPERATOR READS AND UNDERSTANDS THE OPERATOR'S MANUAL FOR THIS MACHINE.



WARNING

IMPROPER OPERATION OF THIS MACHINE CAN CAUSE INJURY OR DEATH.

BEFORE STARTING THE ENGINE, DO THE FOLLOWING:

1. READ THE OPERATOR'S MANUAL.
2. READ ALL SAFETY DECALS ON THE MACHINE.
3. CLEAR THE AREA OF OTHER PERSONS.

LEARN AND PRACTICE SAFE USE OF MACHINE CONTROLS IN A SAFE, CLEAR AREA BEFORE YOU OPERATE THIS MACHINE ON A JOB SITE.

It is your responsibility to observe pertinent laws and regulations and to follow manufacturer's instructions on machine operation and maintenance.

See your Authorized Case dealer for additional operator's manuals, parts catalogs, and service manuals.

TO THE PURCHASER OF A CASE TRACTOR

The care you give your Case Tractor will greatly determine the satisfaction and service you will obtain from it. Use this manual as your guide. By observing the instructions and suggestions in this manual, your Case Tractor will serve you well for many years.

As an Authorized Case Dealer, we stock Genuine Case Parts, which are manufactured with the same precision and skill as the original equipment. Our factory trained staff is kept well informed on the best methods of servicing Case equipment and is ready and able to help you.

Should you require additional aid or information, contact us.

Your Authorized Case Dealer



**LOOK FOR THIS SYMBOL TO POINT
OUT IMPORTANT SAFETY PRECAUTIONS**

**TO INSURE EFFICIENT AND PROMPT SERVICE, PLEASE
FURNISH US WITH THE MODEL, SERIAL, ENGINE AND
TRANSMISSION SERIAL NUMBERS OF YOUR TRACTOR IN ALL
CORRESPONDENCE OR CONTACTS.**



Figure 1

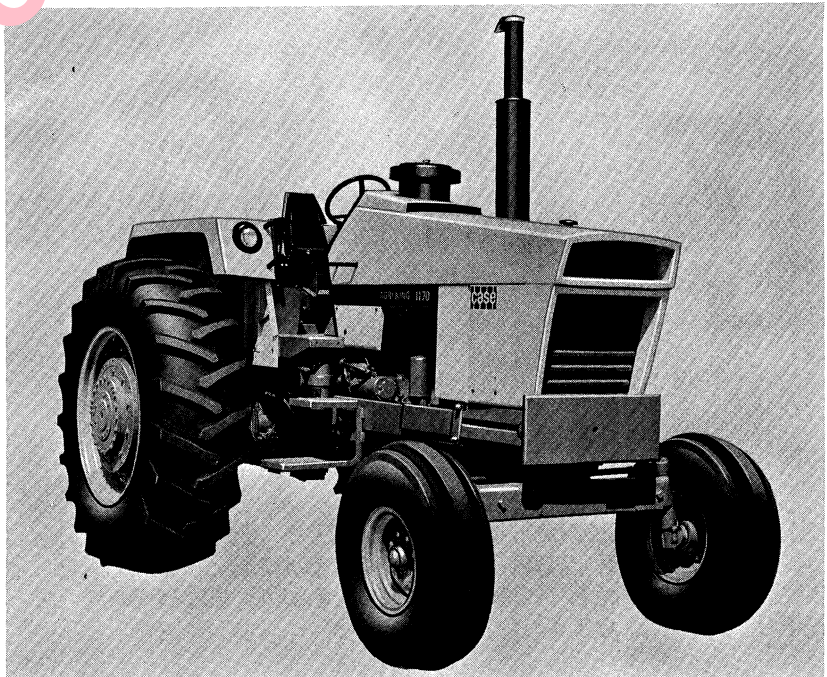


Figure 2

SERIAL NUMBERS

When ordering parts from your Authorized Case Dealer and in all contacts or correspondence with your dealer, relative to the Tractor always specify the Model, Serial, Engine and Transmission Serial Numbers of your Tractor.

The Model and Serial Numbers are stamped on the number plate located on the outside and lower left hand side of the fire wall assembly, Figure 3. The Engine Number is stamped on a plate fastened to the rear right hand side of the engine block, Figure 4. The transmission Serial Number is stamped on a plate and fastened to the right hand side and to the front of the axle on the transmission housing, Figure 5.

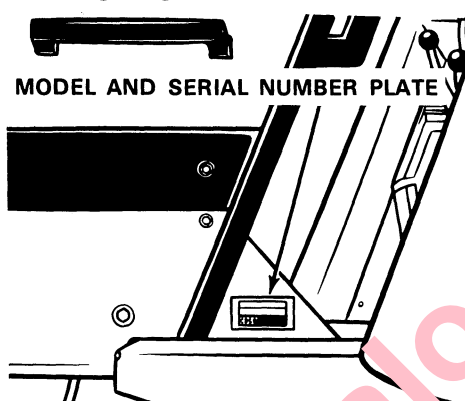


Figure 3

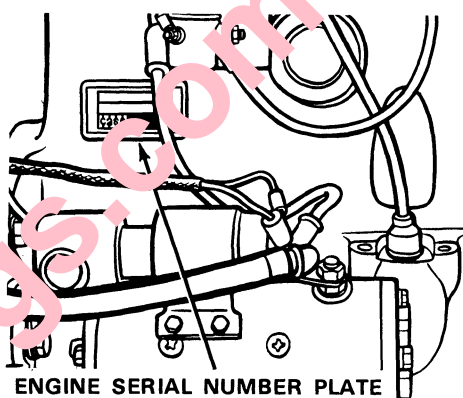


Figure 4

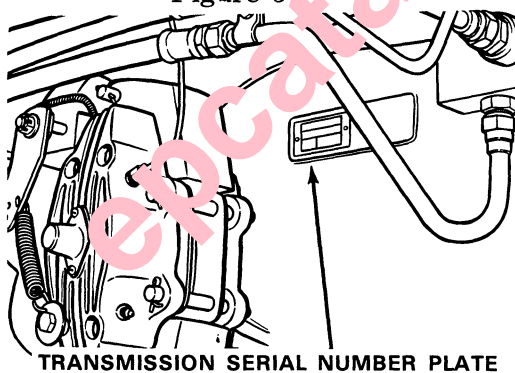


Figure 5

NOTE The terms "Right Hand" and "Left Hand" whenever used in this manual, apply to the tractor when facing in the direction the tractor will move in forward operation.

For reference, fill in the Serial Numbers of your tractor in spaces provided below.

Model Designation _____

Tractor Serial Number _____

Engine Serial Number _____

Transmission Serial Number _____

[Buy now](#)

[Case 1170 Tractor PDF Operator's Manuals](#)

[With Instant Download](#)