

epcatalogs.com

685 Tractor

Operators Manual

9-11273

CASE* *III



This symbol means ATTENTION! BECOME ALERT! YOUR SAFETY IS INVOLVED. The message that follows the symbol contains important information about your safety. Carefully read the message. Make sure you fully understand the causes of possible injury or death.

SB001

IF THIS MACHINE IS USED BY AN EMPLOYEE, IS LOANED, OR IS RENTED, MAKE SURE THAT THE OPERATOR UNDERSTANDS THE TWO INSTRUCTIONS BELOW.

BEFORE THE OPERATOR STARTS THE ENGINE:

1. GIVE INSTRUCTIONS TO THE OPERATOR ON SAFE AND CORRECT USE OF THE MACHINE.
2. MAKE SURE THE OPERATOR READS AND UNDERSTANDS THE OPERATOR'S MANUAL FOR THIS MACHINE.

WARNING

IMPROPER OPERATION OF THIS MACHINE CAN CAUSE INJURY OR DEATH.

BEFORE STARTING THE ENGINE, DO THE FOLLOWING:

1. READ THE OPERATOR'S MANUAL.
2. READ ALL SAFETY DECALS ON THE MACHINE.
3. CLEAR THE AREA OF OTHER PERSONS.

LEARN AND PRACTICE SAFE USE OF MACHINE CONTROLS IN A SAFE, CLEAR AREA BEFORE YOU OPERATE THIS MACHINE ON A JOB SITE.

It is your responsibility to observe pertinent laws and regulations and to follow manufacturer's instructions on machine operation and maintenance.

See your Authorized Case dealer for additional operator's manuals, parts catalogs, and service manuals.

TO THE OWNER OF A CASE INTERNATIONAL TRACTOR

Use this manual as your guide. If you follow the instructions given in this manual, your Case International Tractor will work well for many years.

Your Dealer can give you assistance with Case Company made parts and persons with special training that know the best methods of repair and maintenance for your tractor.

Call your Dealer if you need any assistance or information.

Your Authorized Case Dealer



Figure 1

NOTE: *Where right hand and left hand of the tractor is used in this manual it means the same as your right hand and left hand when you are in the tractor seat looking forward.*

SERIAL NUMBERS

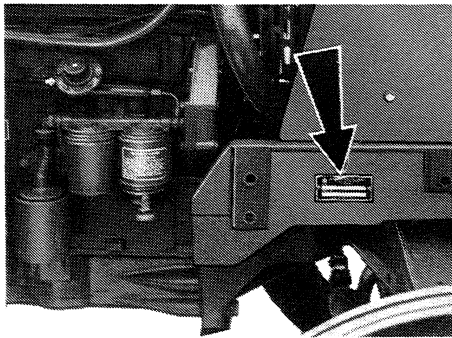
When ordering parts, requesting information or assistance always give the model and serial numbers of your tractor.

Write the model and serial numbers of your tractor on the lines below:

1. TRACTOR MODEL NUMBER _____
2. PRODUCT IDENTIFICATION NUMBER _____
3. ENGINE SERIAL NUMBER _____
4. TRANSMISSION SERIAL NUMBER _____
5. MFD AXLE SERIAL NUMBER _____
6. ROPS FRAME SERIAL NUMBER _____
7. CAB SERIAL NUMBER _____

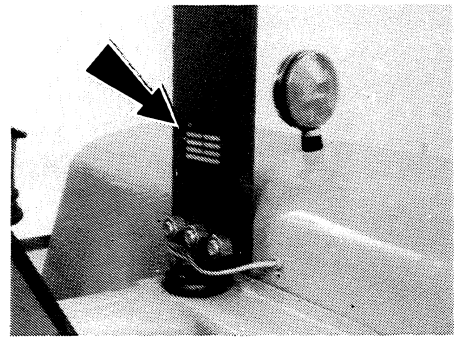
Serial Number Location

MODEL AND PRODUCT
IDENTIFICATION NUMBER
(P I N) PLATE



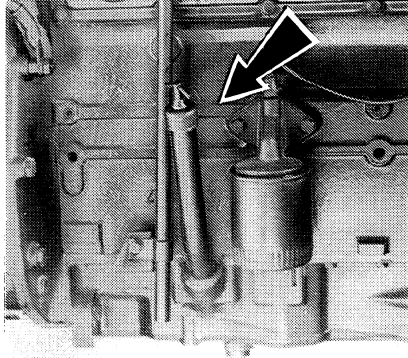
On right hand side of front bolster.

ROPS FRAME SERIAL
NUMBER PLATE



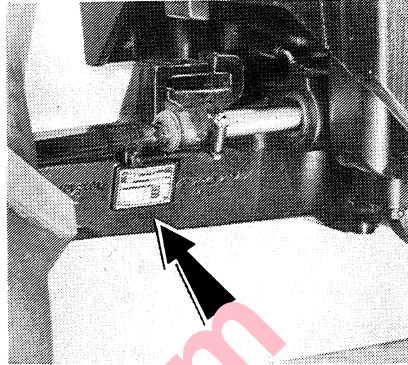
On right hand upper frame.

ENGINE SERIAL NUMBER



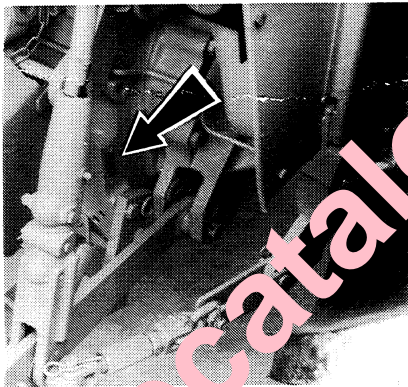
On right hand side of engine.

MFD AXLE SERIAL NUMBER



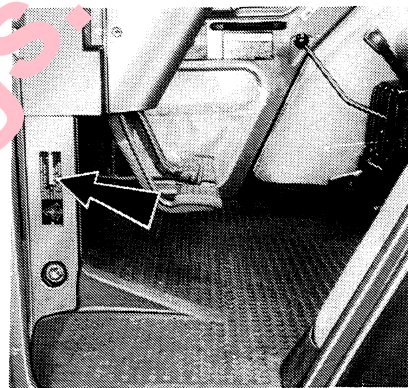
On rear left hand of housing.

TRANSMISSION SERIAL NUMBER



On right hand rear of transmission

CAB SERIAL NUMBER



Inside cab, left ,lower front

[Buy now](#)

[Case 685 Tractor PDF Operator's Manual](#)

[With Instant Download](#)