

epcatalogs.com

385 Tractor

Operators Manual

9-11393

Reprinted

CASE IH






THIS SAFETY ALERT SYMBOL INDICATES IMPORTANT SAFETY MESSAGES IN THIS MANUAL. WHEN YOU SEE THIS SYMBOL, CAREFULLY READ THE MESSAGE THAT FOLLOWS AND BE ALERT TO THE POSSIBILITY OF PERSONAL INJURY OR DEATH.

M171B

If Safety Decals on this machine use the words **Danger, Warning or Caution**, which are defined as follows:

- **DANGER:** Indicates an immediate hazardous situation which if not avoided, will result in death or serious injury. The color associated with Danger is RED.
- **WARNING:** Indicates an potentially hazardous situation which if not avoided, will result in serious injury. The color associated with Warning is ORANGE.
- **CAUTION:** Indicates an potentially hazardous situation which if not avoided, may result in minor or moderate injury. It may also be used to alert against unsafe practices. The color associated with Caution is YELLOW.

If Safety Decals on this machine are "ISO" two panel Pictorial, decals are defined as follows:

- The first panel indicates the nature of the hazard.
- The second panel indicates the appropriate avoidance of the hazard.
- Background color is YELLOW.
- Prohibition symbols such as   and  if used, are RED.



WARNING

IMPROPER OPERATION OF THIS MACHINE CAN CAUSE INJURY OR DEATH. BEFORE USING THIS MACHINE, MAKE CERTAIN THAT EVERY OPERATOR:

- Is instructed in safe and proper use of the machine.
- Reads and understands the Manual(s) pertaining to the machine.
- Reads and understands ALL Safety Decals on the machine.
- Clears the area of other persons.
- Learns and practices safe use of machine controls in a safe, clear area before operating this machine on a job site.

It is your responsibility to observe pertinent laws and regulations and follow Case Corporation instructions on machine operation and maintenance.

TO THE OWNER OF A CASE INTERNATIONAL TRACTOR

Use this manual as your guide. If you follow the instructions given in this manual, your Case International Tractor will work well for many years.

Your Dealer can give you assistance with CASE CORPORATION made parts and persons with special training that know the best methods of repair and maintenance for your tractor.

Call your Dealer if you need any assistance or information.

Your Authorized Case Dealer



Figure 1

NOTE: Where right hand and left hand of the tractor is used in this manual it means the same as your right hand and left hand when you are in the tractor seat looking forward.

SERIAL NUMBERS

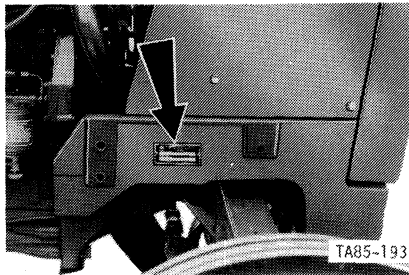
When ordering parts, requesting information or assistance always give the model and serial numbers of your tractor.

Write the model and serial numbers of your tractor on the lines below:

1. TRACTOR MODEL NUMBER _____
2. PRODUCT IDENTIFICATION NUMBER _____
3. ENGINE SERIAL NUMBER _____
4. TRANSMISSION SERIAL NUMBER _____
5. MFD AXLE SERIAL NUMBER _____
6. ROPS FRAME SERIAL NUMBER _____

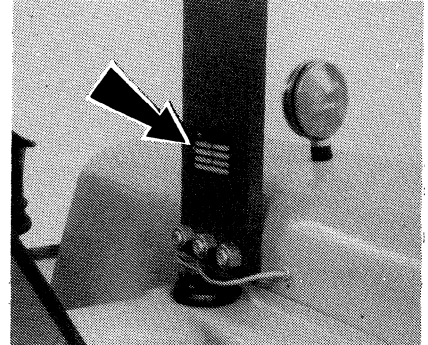
Serial Number Location

TRACTOR MODEL AND PRODUCT
IDENTIFICATION NUMBER
(P I N) PLATE



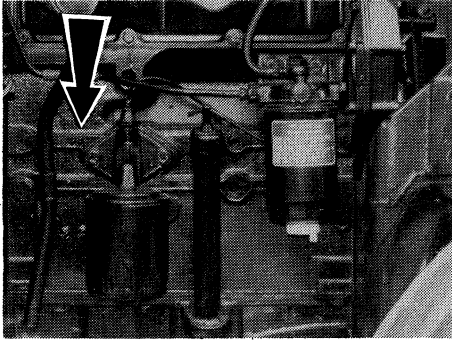
On right hand side of front bolster.

ROPS FRAME SERIAL
NUMBER PLATE



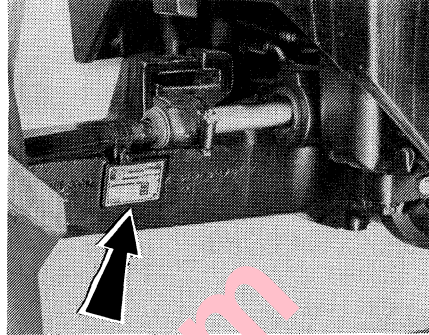
On right hand upper frame.

ENGINE SERIAL NUMBER



On right hand side of engine.

MFD AXLE SERIAL NUMBER



On rear hand of housing.

TRANSMISSION SERIAL NUMBER



On right hand side of transmission

Figure 2

[Buy now](#)

[Case 385 Tractor Operator's Manual PDF](#)

[With Instant Download](#)