

TO THE OWNER OF A CASE IH TRACTOR

Use this manual as your guide. If you follow the instructions given in this manual, your Case IH tractor will work well for many years.

Your Dealer can give you assistance with CASE CORPORATION made parts and persons with special training that know the best methods of repair and maintenance for your tractor.

Call your Dealer if you need any assistance or information.

Your Authorized Case IH Dealer



NOTE: When you are in the tractor seat looking forward, the right hand (RH) and left hand (LH) of the tractor are the same as your right hand and left hand.

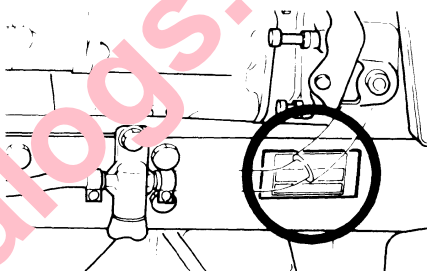
SERIAL NUMBERS

When ordering parts or when requesting information or assistance always give the model and serial numbers of your tractor.

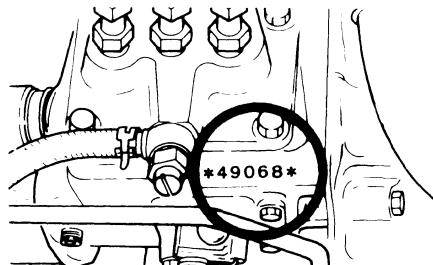
Write the model and serial numbers of your tractor on the lines below.

1. TRACTOR MODEL NUMBER _____
2. PRODUCT IDENTIFICATION NUMBER _____
3. ENGINE SERIAL NUMBER _____
4. ROPS SERIAL NUMBER _____

TRACTOR MODEL NUMBER AND
PRODUCT IDENTIFICATION NUMBER
PLATE



ENGINE SERIAL NUMBER



ROPS PRODUCT IDENTIFICATION
NUMBER PLATE

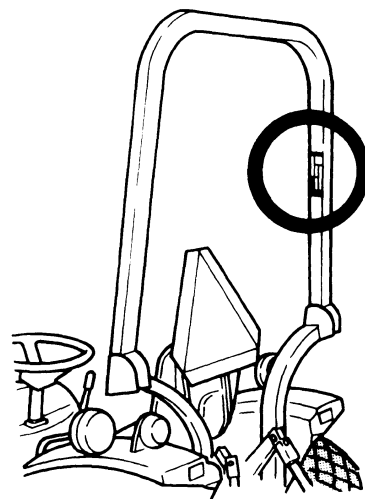


TABLE OF CONTENTS

TO THE OWNER OF A CASE IH TRACTOR	I
SERIAL NUMBERS	II
TABLE OF CONTENTS	III, IV
SAFETY	V–XI
Safety Rules	V
Decals	VI–VIII
Before Starting	VIII
Operation	IX, X
Service	XI
HAND SIGNALS	XII, XIII
DIESEL ENGINE SPECIFICATIONS	1, 2
GENERAL TRACTOR SPECIFICATIONS	3–5
TRAVEL SPEEDS—Gear Drive	6
TRAVEL SPEEDS—Hydrostatic Drive	7
APPROXIMATE MEASUREMENTS	
AND WEIGHTS	8–11
TIRE AND WHEEL SPECIFICATION	12–14
Tire Inflation Specifications	13, 14
Tire Load Capacity	14
TIRE SIZE COMBINATIONS—MFD	15
FRONT WHEEL TREAD POSITIONS	16
REAR WHEEL TREAD POSITIONS	17, 18
WHEEL MOUNTING TORQUES	19
DIESEL FUEL SPECIFICATIONS	20, 21
Specifications For Acceptable	20
Fuel Conditioner	21
INSTRUMENTS AND INDICATORS	22–24
OPERATING CONTROLS	25–45
Control Pedals	28–31
Control Levers (Gear Drive)	32–35
Control Levers (Hydrostatic Drive)	36–39
Operators Seat	40
Amber Warning Lamps—Operation	
Turn Signals and SMV Emblem	41, 42
Implement Warning Lamps—	
SMV Emblem	43
Rear Work Light (If Equipped)	44
Severely Conductor Electrical	
Connector (If Equipped)	45
OPERATING INSTRUCTIONS	46, 47
Run-In Procedure	46
TOWING	47
HOW TO TRANSPORT TRACTOR	47
BEFORE STARTING THE ENGINE	48
NORMAL STARTING	
PROCEDURE	49–52
Starting Procedure for Hydrostatic Drive	
Tractors	52
STOPPING THE ENGINE	53
COLD TEMPERATURE OPERATION	54–56
Coolant Heater	56
SEAT BELT	57

ROLLOVER PROTECTIVE STRUCTURE	
(ROPS)	58–67
Foldable ROPS Frame	58
Normal Operating Position	58
Low Clearance Positions	59
Folding the ROPS	60, 61
Securing the ROPS in the Upright	
Position	62–66
Tractor Roll Over	67
Safety Rules	67
ROPS Label	67
GEAR DRIVE TRANSMISSION	68
Transmission Operation	68
HYDROSTATIC DRIVE TRANSMISSION	69
Transmission Operation	69
MECHANICAL FRONT DRIVE (MFD)	
(IF EQUIPPED)	70
DIFFERENTIAL LOCK	71
POWER TAKEOFF (PTO)	72, 73
Rear PTO	72
Mid PTO (If Equipped)	73
POWER TAKEOFF GUARDS	74
PTO OPERATING SAFETY	75
RAWBAR	76
CONNECTING IMPLEMENT TO	
RAWBAR	77
SAFETY CHAIN	78
THREE POINT HITCH SYSTEM	79
HITCH SYSTEM ADJUSTMENTS	80, 81
Lift Links and Turnbuckle	80
Upper Link	81
Stabilizer Chain	81
HITCH OPERATION	82, 83
Connect Implement to Hitch	82
Hitch Control Lever	82
Disconnect Implement from Hitch	82
Hitch Lowering Speed Adjustment	83
REMOTE HYDRAULIC CONTROL VALVE	
(IF EQUIPPED)	84
HYDRAULIC ADAPTER PLATE	85
ADDING FLUID AFTER CONNECTING	
CYLINDERS AND HOSES	86
FRONT WHEEL ADJUSTMENT	87–89
Toe-in Adjustment	88, 89
REAR WHEEL ADJUSTMENT	90, 91
Reversing the Rear Wheels	90
Installing the Extension Spacers	91
TRACTOR BALLAST	92–94
Front End Weights	92
Rear Wheel Weights	93
Tire Liquid Weights	94
LUBRICATION AND PREVENTIVE	
MAINTENANCE	96

TABLE OF CONTENTS

LUBRICATION	97–100	CLUTCH PEDAL ADJUSTMENT	131
Engine Hourmeter	97	Service Specifications	131
Service After First 50 Hours of		NEUTRAL START SWITCH	132, 133
Operation	100	ELECTRICAL SYSTEM	134–141
HOOD	101	Head Lamps	134
ENGINE LUBRICATION	102–105	Turn Signal and Flasher Lamps	135
Service Specifications	102	Rear Red Lamp	136
Engine Oil Level	102	Instrument Panel Lamps	136
Engine Oil Change	103	Rear Work Lamp (If Equipped)	137
Engine Oil Selection	104	Fuses	138
Engine Lubrication Oil Viscosity	104	Fusible Link	139
Engine Oil Filter	105	Head Lamp Adjustment	140
TRANSMISSION & HYDRAULIC		General Service Information For	
LUBRICATION	106–109	Alternator Charging System	141
Service Specifications	106	BATTERY	142–144
Transmission Oil Level (Gear)	106	Auxiliary Battery Connections	142, 143
Transmission Oil Level (Hydro)	106	Battery Cables and Terminals	143
Transmission Oil Change	107	Removal and Installation of Battery	143
Hydraulic Filter Screen	108	When Charging the Battery	144
Hydraulic Fluid Filter (Hydro)	109	When Battery Is Not In Use	144
FRONT WHEEL BEARING LUBRICATION		ROPS EQUIPMENT	145, 146
(2WD)	110, 111	Service Specifications	145
Service Specifications	110	ROPS Inspection and Maintenance	145
FRONT AXLE LUBRICATION		Seat Belt Inspection and Maintenance	146
(MFD)	112, 113	STORING THE TRACTOR	147
Service Specifications	112	REMOVING FROM STORAGE	148
Front Axle Oil Level	112	CASE TECHNICAL MANUALS	149
Front Axle Oil Change	113		
TIRE AND RIM SERVICE	114, 115		
Service Specifications	114		
Tire Inflation Procedure	114		
Tire and Rim Repair	115		
Tire Installation	115		
COOLING SYSTEM	116–123		
Service Specifications	116		
Pressure Cooling System	116		
Cleaning The Cooling System	117		
Coolant Solution	118		
Grille Screens and Radiator Area	119		
Thermostat Check	120		
Thermostat Replacement	120, 121		
Fan Belt Adjustment	122		
Fan Belt Replacement	123		
FUEL SYSTEM	124–127		
Service Specifications	124		
Water Removal from the Filter Cup	124		
Fuel Filter Element Replacement	125		
Fuel System Air Removal	126		
Fuel Injection Pump and Nozzle Check	127		
AIR INDUCTION SYSTEM	128–130		
Service Specifications	128		
Dust Container and Air Filter Element			
Removal	129		
Element Cleaning	130		
System Inspection	130		

SAFETY

Safety Rules

Understand that your safety and the safety of other persons is measured by how you service, and operate this machine. Know the positions and operations of all controls before you try to operate. **MAKE SURE YOU CHECK ALL CONTROLS IN A SAFE AREA BEFORE STARTING YOUR WORK.**

READ THIS MANUAL COMPLETELY and make sure you understand the controls. All equipment has a limit. Make sure you understand the speed, brakes, steering, stability, and load characteristics of this machine before you start to operate.

The safety information given in this manual does not replace safety codes, insurance needs, federal, state and local laws. Make sure your machine has the correct equipment needed by the local laws and regulations.

CASE IH is continuing to work for your safety by making tractors with better protection and by giving these rules for safe operation.



The safety decals on this machine contain instructions for your safety, and are reproduced on the following pages. Read their safety messages before operating this machine.

Additional safety messages are included throughout this manual. Read the section pertaining to your activity before you start. Refer to page locations in the **TABLE OF CONTENTS**.

[Buy now](#)

[Case 235 Tractor PDF Operator's Manual](#)

[With Instant Download](#)