

epcatalogs.com

W9/WR9 Tractors

Operators Manual

1004217R2

Reprinted

CASE III



This symbol means ATTENTION! BECOME ALERT! YOUR SAFETY IS INVOLVED. The message that follows the symbol contains important information about your safety. Carefully read the message. Make sure you fully understand the causes of possible injury or death.

SB001

IF THIS MACHINE IS USED BY AN EMPLOYEE, IS LOANED, OR IS RENTED, MAKE SURE THAT THE OPERATOR UNDERSTANDS THE TWO INSTRUCTIONS BELOW.

BEFORE THE OPERATOR STARTS THE ENGINE:

1. GIVE INSTRUCTIONS TO THE OPERATOR ON SAFE AND CORRECT USE OF THE MACHINE.
2. MAKE SURE THE OPERATOR READS AND UNDERSTANDS THE OPERATOR'S MANUAL FOR THIS MACHINE.



IMPROPER OPERATION OF THIS MACHINE CAN CAUSE INJURY OR DEATH.

BEFORE STARTING THE ENGINE, DO THE FOLLOWING:

1. READ THE OPERATOR'S MANUAL.
2. READ ALL SAFETY DECALS ON THE MACHINE.
3. CLEAR THE AREA OF OTHER PERSONS.

LEARN AND PRACTICE SAFE USE OF MACHINE CONTROLS IN A SAFE, CLEAR AREA BEFORE YOU OPERATE THIS MACHINE ON A JOB SITE.

It is your responsibility to observe pertinent laws and regulations and to follow manufacturer's instructions on machine operation and maintenance.

See your Authorized Case dealer for additional operator's manuals, parts catalogs, and service manuals.

TO THE OWNER

By selecting an International Harvester tractor as your new power partner, you have purchased a product of one of the world's foremost manufacturers of farm equipment. We feel sure you will obtain from this machine the economical and superior performance it is designed to give. It is certain that you will derive a large measure of personal satisfaction from operating it.

Years of tractor manufacturing experience and actual contact with agricultural problems in the field have been combined with advancements in engineering and metallurgical science to produce all the features and refinements built into your tractor. The liberal use of precision-type bearings, the heavy-duty crankshaft, force-feed lubrication, dependable ignition, extra-large flywheel and the efficient air, oil and fuel cleaners are some of the features that give your tractor its eager power to do all your power jobs with thoroughness, speed and economy. Properly adjusted, operated, and maintained, this tractor will respond to every reasonable demand you make upon it and give you reliable service for years to come.

It is the policy of International Harvester Company to improve its products whenever it is possible and practical to do so. We reserve the right to make changes or add improvements at any time without incurring any obligation to make such changes on tractors sold previously.

All illustrations and descriptive matter in this publication apply to International Harvester products sold under the McCormick, McCormick-International, McCormick-Deering, or McCormick-Deering International trade name.

CONTENTS

Description	Page No.
INTRODUCTION	Inside
Delivery report (to be filled in when tractor is delivered)	Front Cover
General	2
Serial numbers, engine and tractor	2
DESCRIPTION	
Before starting the tractor	8
Instruments and controls	4 to 7
Preparing your tractor for each day's work	9
Views of the tractors	3
OPERATING YOUR TRACTOR	
Driving the tractor	15, 17
Operating a gasoline engine	10, 11
Operating a distillate engine	11, 14
Operating a distillate engine on gasoline	14, 15
Operating a kerosene engine	14
Operating the belt pulley and power take-off	17, 18
LUBRICATION	
Engine and chassis lubricant specifications	28
General engine lubrication	19, 20
Greasing the front wheels	29
Lubrication guide	22 to 27
Lubricating oil and grease specifications	29
Oil filter	20, 21
MAINTENANCE	
Adjusting the drawbar	62, 63
Air cleaning system	37
Battery ignition unit	38 to 41
Brakes (W-9 tractor)	59, 60
Brakes (WR-9 tractor)	61
Carburetor	32, 33
Clutch (W-9 tractor)	60
Clutch (WR-9 tractor)	62
Cold weather precautions	33, 34
Cooling system	35, 36
Crawling motor	50 and 53
Fuel pump	33
Fuel strainer	31
Generator	47 and 51
Magneto (tractors so equipped)	42 to 44
Periodic inspections	30, 31
Pneumatic tires	64 to 66
Spark plugs and cables	38
Starting and lighting equipment (tractors with battery ignition and voltage regulation)	45 to 50
Starting and lighting equipment (tractors without voltage regulation)	51 to 55
Storage battery	56 to 58
Storing and housing your tractor	71
Trouble shooting	67 to 70
Valve clearance adjustment	58
Wheels	64
Wiring diagrams (starting and lighting)	48 and 54
SPECIAL EQUIPMENT	72 to 83
SPECIFICATIONS	84, 85
COMPREHENSIVE INDEX	86, 87

INTRODUCTION

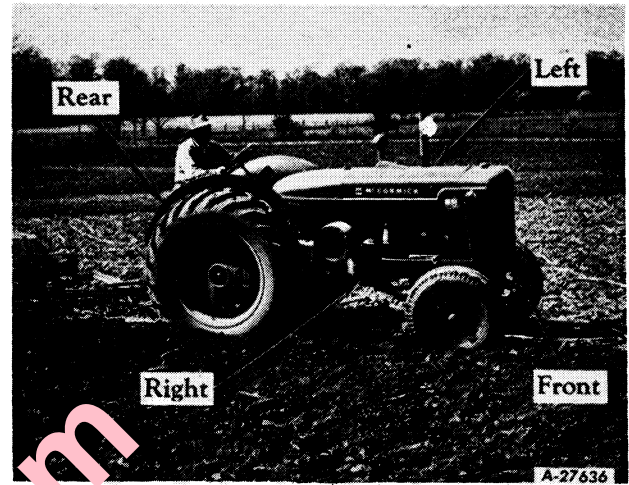
Assembled in this book are operating and maintenance instructions for the W-9 and WR-9 tractors. This material has been prepared in detail in the hope that it will help you to better understand the correct care and efficient operation of your tractor.

If you should need information not given in this manual, or require the services of a trained mechanic, get in touch with the International Harvester dealer in your locality. Dealers are kept informed on the latest methods of servicing tractors. They carry stocks of IH parts, and are backed in every case by the full facilities of a nearby International Harvester District Office.

Throughout this manual the use of the terms LEFT, RIGHT, FRONT, and REAR must be understood to avoid confusion when following instructions. LEFT and RIGHT indicate the left and right sides of the tractor when facing forward in the driver's seat. Reference to FRONT indicates the radiator end of the tractor, and REAR the drawbar. See *Illust. 2*.

The illustrations in this manual are numbered to correspond with the pages on which they appear; for example, *Illust. 7A* and *7B* are on page 7.

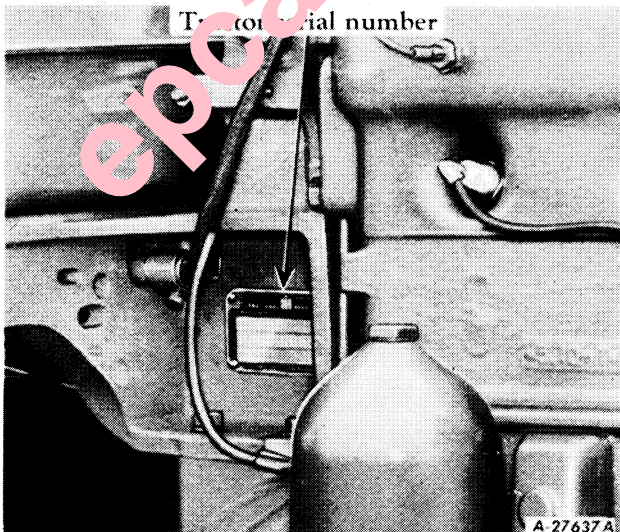
When in need of parts, always specify the tractor and engine serial numbers. The trac-



Illust. 2

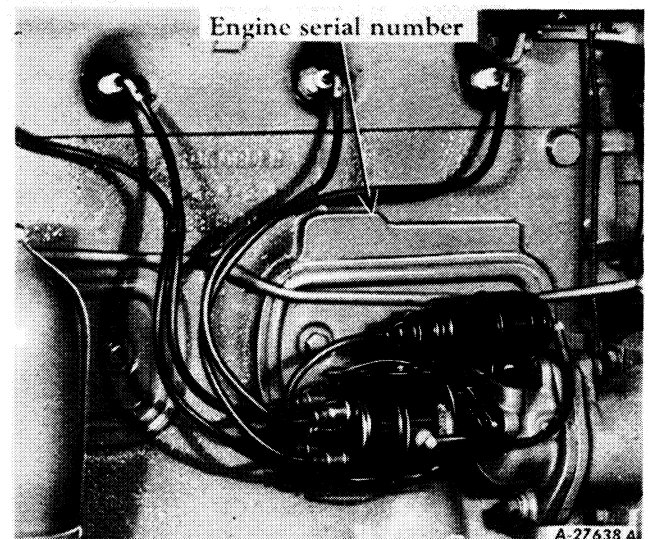
tor serial number is stamped on a name plate attached on the right side of the fuel tank front support. See *Illust. 2A*. The serial number is preceded by the letters WCB for the W-9 and RCB for the WR-9. The engine serial number is stamped on the right side of the engine crankcase above the battery ignition unit. See *Illust. 2B*. This serial number is preceded by the letters WCBM for the W-9 and RCBM for the WR-9.

For ready reference we suggest that you write these serial numbers in the spaces provided on the Delivery Report.



Illust. 2A

Location of tractor serial number.



Illust. 2B

Location of engine serial number.

[Buy now](#)

[Case W9/WR9 Tractors PDF Operator's Manual](#)

[With Instant Download](#)