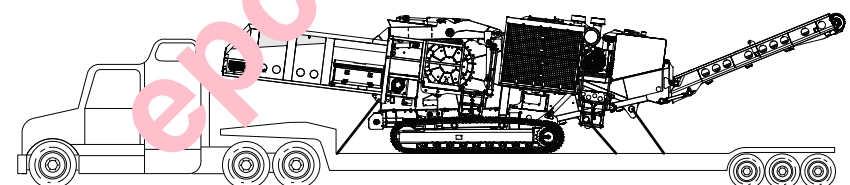


Tigercat



6500/6900

MOVING AND TRANSPORTING INSTRUCTIONS



62034AMUL

ISSUE 1.1 MARCH 2021

epcatalogs.com

CONTENTS

MOVING INSTRUCTIONS.....	5
WIRELESS REMOTE.....	9
TETHERED REMOTE.....	10
TRANSPORTING INSTRUCTIONS.....	12

epcatalogs.com

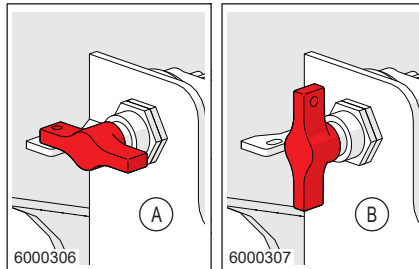
epcatalogs.com

MOVING INSTRUCTIONS

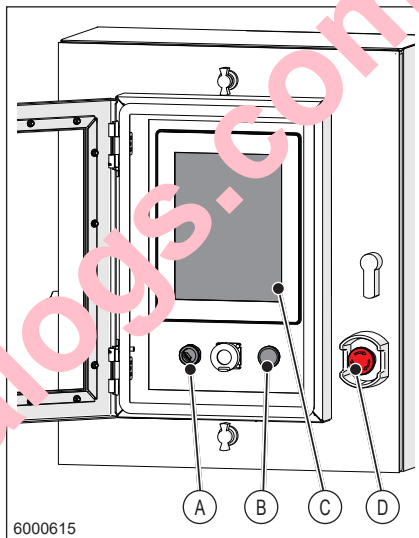
IMPORTANT!

Read and understand these safety instructions before loading or off-loading this machine. See operator's manual in the storage box in the engine compartment for additional information.

1. Turn the battery disconnect switch to the ON position. The switch is located behind the main electrical panel.
2. Make sure the area is clear and that all personnel are at a safe distance before moving the machine.
3. Check that no other personnel have moved into a hazardous area before starting the machine.
4. Check that personnel are clear of the drive belt tensioner before cranking the engine.
5. Open the main electrical panel front window.
6. Turn and hold the ignition key to the START position to crank the engine.
NOTE: The drive belt tensioner will disengage to allow the engine to start. This will take four seconds and the electric service pump will be heard running. Hold the ignition key in the START position until engine starts.
7. When the engine starts, release the ignition key to the RUN position.
8. Wait for the drive belt tensioner to engage (approximately 35 seconds).

**Battery Disconnect Switch**

- A OFF Position (Switch Open)
B ON Position (Switch Closed)

**Main Electrical Panel**

- A Ignition Key Switch
B System Reset Button
C Computer Display
D Emergency Engine Stop Button

[Buy now](#)

[Tigercat 6900 Grinder Operators Manual PDF](#)

[With Instant Download](#)