

epcatalogs.com

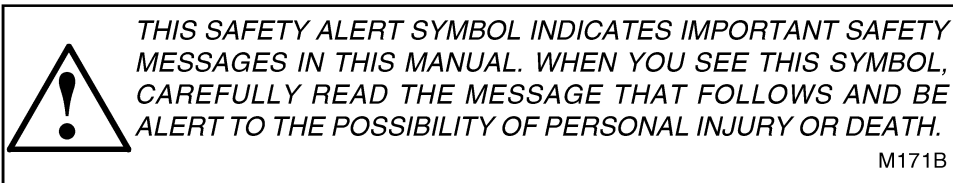
4568 Tractor

Operators Manual

1084479R1

Reprinted



CASE 



If Safety Decals on this machine use the words **Danger, Warning or Caution**, which are defined as follows:

- **DANGER:** Indicates an immediate hazardous situation which if not avoided, will result in death or serious injury. The color associated with Danger is RED.
- **WARNING:** Indicates an potentially hazardous situation which if not avoided, will result in serious injury. The color associated with Warning is ORANGE.
- **CAUTION:** Indicates an potentially hazardous situation which if not avoided, may result in minor or moderate injury. It may also be used to alert against unsafe practices. The color associated with Caution is YELLOW.

If Safety Decals on this machine are ISO two panel Pictorial, decals are defined as follows:

- The first panel indicates the nature of the hazard.
- The second panel indicates the appropriate avoidance of the hazard.
- Background color is YELLOW.
- Prohibition symbols such as  and  if used, are RED.



WARNING

IMPROPER OPERATION OF THIS MACHINE CAN CAUSE INJURY OR DEATH. BEFORE USING THIS MACHINE, MAKE CERTAIN THAT EVERY OPERATOR:

- Is instructed in safe and proper use of the machine.
- Reads and understands the Manual(s) pertaining to the machine.
- Reads and understands ALL Safety Decals on the machine.
- Clears the area of other persons.
- Learns and practices safe use of machine controls in a safe, clear area before operating this machine on a job site.

It is your responsibility to observe pertinent laws and regulations and follow Case Corporation instructions on machine operation and maintenance.

To The Owner

Your new International 4568 Articulated Turbo Diesel Tractor is designed to meet today's exacting operating requirements. The ease and comfort of operation, the ability to match ground speeds to engine power and work requirement, and the effortless versatility of the hydraulic system are intended to lighten your work and shorten your hours on the job.

Your local International Harvester dealer is interested in the performance you receive from this tractor. He has factory-trained servicemen, informed in the latest method of servicing tractors, and modern tools, and original-equipment IH service parts which assure proper fit and good performance.

To obtain top performance and assure economical operation the tractor should be inspected, depending on its use, periodically, or at least once a year, by your International Harvester Dealer.

Before you operate the tractor study this manual carefully. It has been prepared to help you operate and maintain your tractor with utmost efficiency. New copies may be ordered from your dealer at a nominal price.

When in need of parts, always specify the tractor and engine serial numbers, including prefix and suffix letters. Write these serial numbers in the spaces provided.



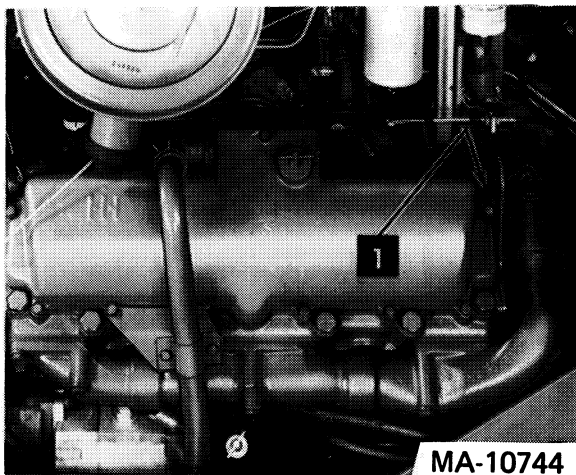
Universal symbols are used to pictorially identify various tractor instruments and controls. Throughout this manual, an identifying symbol is placed by the instructions like this example for engine coolant temperature. The waves signify water or coolant and the thermometer indicates temperature. Regardless of the language used in a nation, and without translation, this symbol means water or coolant temperature.

CONTENTS

SERIAL NUMBERS	1	COOLING SYSTEM	21 to 23
INTRODUCTION	2	AIR CLEANING SYSTEM	24 to 26
WORK SAFELY -- FOLLOW THESE RULES	3, 4	ELECTRICAL SYSTEM	26 to 29
TRACTOR INSTRUMENTS AND CONTROLS	5	FRONT AND REAR WHEELS	32
BEFORE OPERATING YOUR NEW TRACTOR	6	WEIGHTS	33
DRIVING THE TRACTOR	7 to 12	STORING THE TRACTOR	34
ENGINE AND FUEL SYSTEM	12 to 17	COLD WEATHER PRECAUTIONS	35
HYDRAULIC CONTROL FOR HYDRAULIC OUTLETS	18	LUBRICATION	35 to 37
HITCHING TRAILING EQUIPMENT TO THE TRACTOR	18	LUBRICATION TABLE	38
AUXILIARY VALVES, REMOTE CYLINDERS AND HYDRAULIC OUTLETS	19 to 21	LUBRICATION GUIDE	39 to 42
		TRACTOR PREVENTIVE MAINTENANCE	43, 44
		CAB EQUIPMENT PREVENTIVE MAINTENANCE	45 to 47
		SPECIFICATIONS	47 to 49

epcatalogs.com

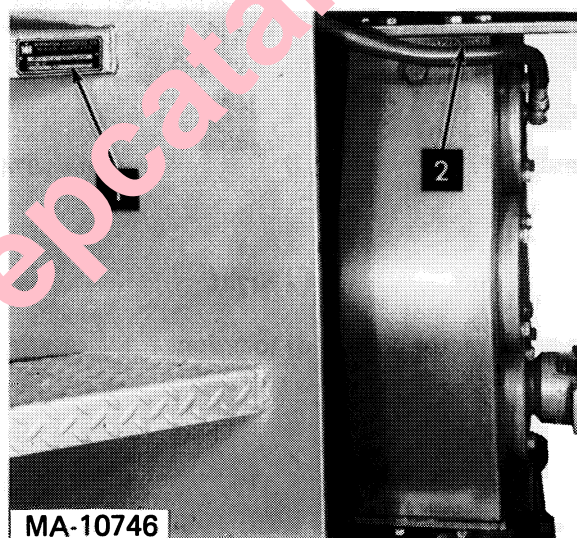
SERIAL NUMBERS



1 - Diesel engine serial number

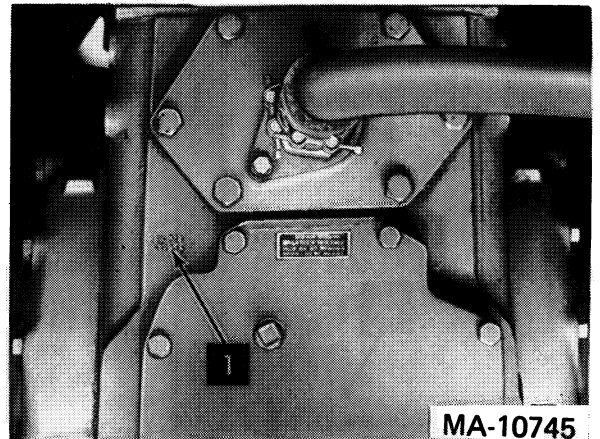
V-800 _____

The engine serial number is stamped on pad located on crankcase "V" rear.

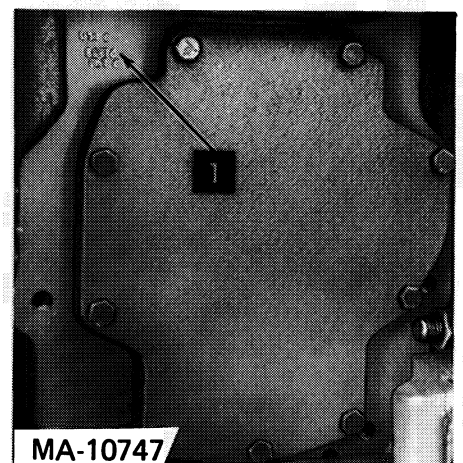


1 - Tractor serial number

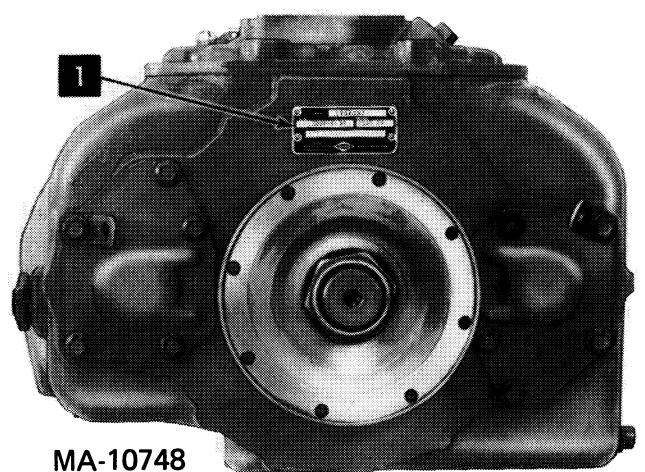
2 - Transfer case serial number



1 - Front axle serial number



1 - Rear axle serial number



1 - Speed transmission serial number

[Buy now](#)

[Case 4568 Tractor PDF Operator's Manual](#)

[With Instant Download](#)