



MANITOU NORTH AMERICA, INC.

6401 Imperial Drive
Waco, TX 76712-6803

NOTE: Manitou Forklift Manuals are continuously updated and subject to change without prior notice. If your Forklift Model or parts are not found in this manual, please contact your dealer or the Manitou North America Parts Department for the latest information and parts availability.

MT 1155
MANISCOPIC
T-3

PARTS
MANUAL

For Parts Orders contact your Manitou North America Dealer or call: **Manitou North America Parts Dept.** (800) 425-3727 or (254) 799-0232. Parts Dept. Fax (254) 867-6504 Website: www.manitou.com/www.mnadealers.com

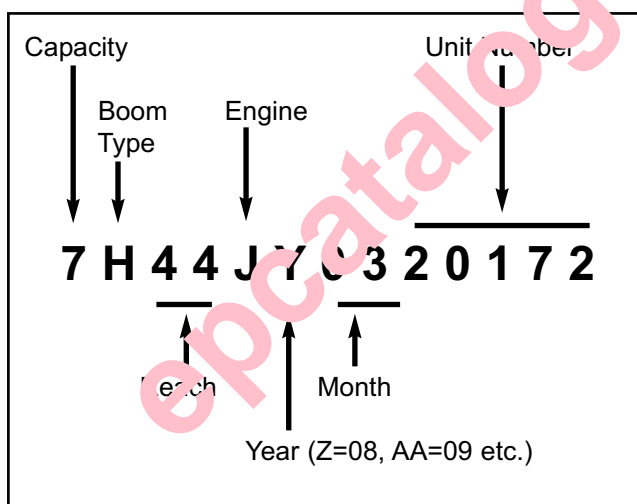
CATALOG 809887
R07-10

NOTE: *This parts manual identifies standard and optional features for this model. Depending on the features of your machine, some of the items identified in the parts lists may, or may not be included with your machine.*

The Table of Contents pages show the page locations of various component groups on the machine.

When ordering service parts, specify the correct part number, full description, quantity required, and the unit model and serial number.

Model and serial numbers for this unit are stamped on a plate located inside the operator's station. The serial number is also stamped on the top front frame. The following reference shows the breakdown of the serial number:



"Right" and "left" are determined from a position standing behind the unit and facing the direction of travel.

Manitou MNA Company reserves the right to make changes or improvements in the design or construction of any part of the unit without incurring the obligation to install such changes on any unit previously delivered.

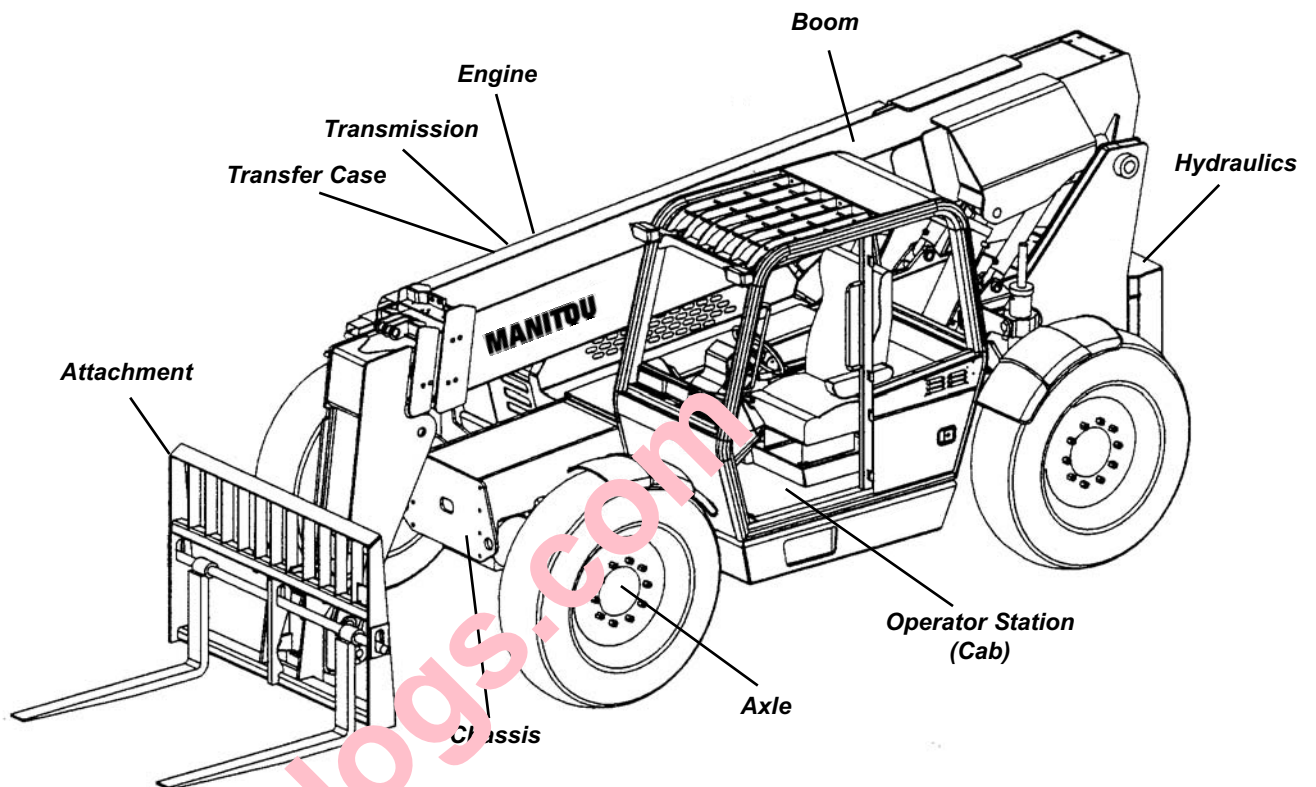
Grease fittings and common attaching hardware, such as cotter pins, set screws, woodruff keys, screws and nuts are included in the parts list, indented below the parts it is associated with, but NOT illustrated, except where a particular routing or special fastening arrangement MUST be maintained. The hardware listed is for mounting purposes and is NOT included when the part is ordered for replacement.

Part numbers for standard bolts are listed indented under the component being fastened, followed by abbreviations for washers/nuts.

Standard attaching hardware torque values are provided on the inside back cover. Unless otherwise specified, all cap screws are Grade 5, cadmium or zinc plated; hexagon nuts for Grade 5 cap screws and bolts are Grade 5.

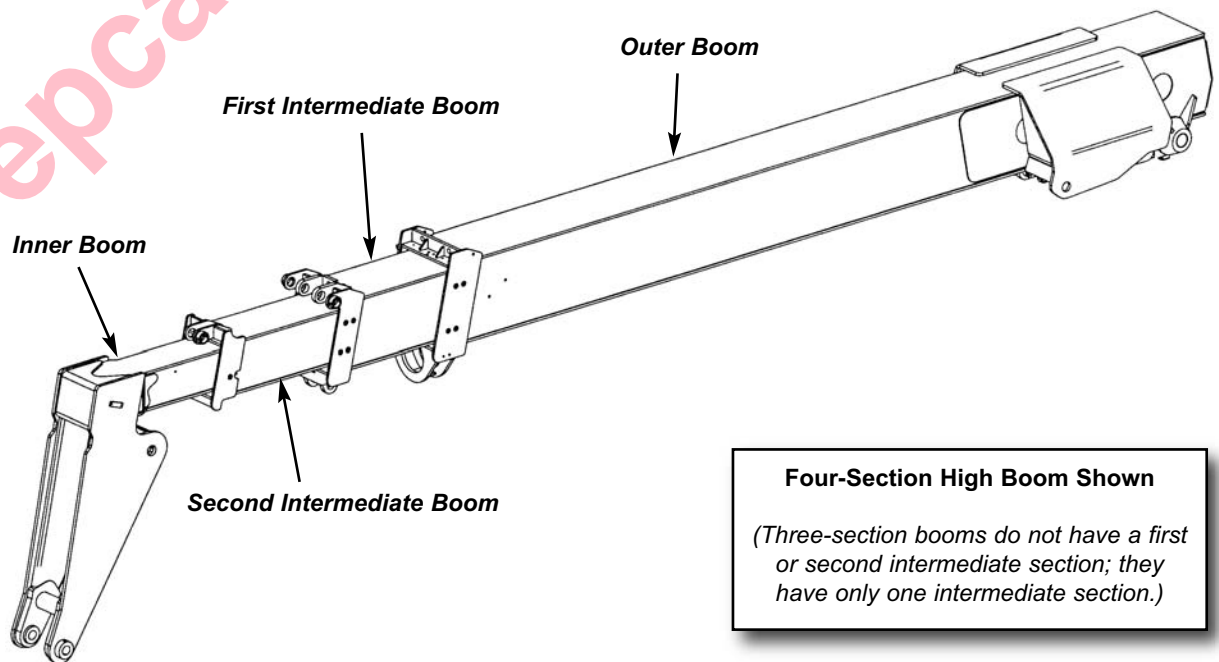
RIGHT

REAR



FRONT

LEFT



	PAGE
INTRODUCTION	Inside Front Cover
Locator Reference	1
Table of Contents	2
 FILTERS	
Filters	8
Analysis Kits (Fluid Analysis)	9
 CAB	
Standard	10
Options	12
Front Window	14
Wiper - Front	16
Top Window and Wiper	18
Window - Left	20
Window - Rear	21
Door - Upper	22
Door - Lower	23
Interior - Dash, Switches, and Panel	24
Heater (No Air Conditioning)	26
Air Conditioner and Heater	28
Air Conditioner - Condenser	30
Air Conditioner - Hoses, Compressor, and Dryer	32
Steering Column Group	34
Steering Column - Tilt Assembly	36
Pedals - Brake and Throttle	38
Seat	40
Cab Components	42
 PERSONNEL WORK PLATFORM SYSTEM	
Personnel Work Platform - 3-Section Boom Components	44
Personnel Work Platform - 4-Section Boom Components	45
Radio Remote Components	46
 CHASSIS	
Rear Door	48
Hood - Engine and Transmission	50
Battery Group	52
Hydraulic Tank Group	54
Fuel Tank Group	58
Outriggers	60

	PAGE
ENGINE	
External Engine Components Group	62
Radiator and Cooler Group	64
Air Cleaner Group	70
Exhaust Group	72
TRANSFER CASE	
External Components	74
Assembly Group	76
TRANSMISSION	
External Components, Electronics and Driveshafts	80
Electronic Controller and Display	82
Converter Housing Group	84
Case Group	86
Torque Converter	87
Charge Pump	88
Pump Drive	89
Gears and Shaft - Forward Low/High	90
Gears and Shaft - Reverse/Neutral	92
Gears and Shaft - 2nd	94
Gears and Shaft - Input	96
Gears and Shaft - Output	97
Drive Plate Group	98
Control Valve Group	99
Control Valve Assembly	100
AXLES	
Front and Rear - External Components	102
Front and Rear - Housing	104
Front and Rear - Swivel Housing and Steer Cylinder	106
Front - Ring Gear and Pinion	108
Rear - Ring Gear and Pinion	109
Front and Rear - Differential	110
Front and Rear - Axle Shaft	111
Front and Rear - Wheel Hub and Planetary	112
Front and Rear - Brakes	113
Parking Brake Caliper Assembly	114

[Buy now](#)

[Manitou MT1155 Maniscopic Parts Manual PDF](#)

[With Instant Download](#)