

epcatalogs.com


# **4100 Tractor**

## **Operators Manual**

**1082532R4**

Reprinted



	<p><b><i>This symbol means ATTENTION! BECOME ALERT! YOUR SAFETY IS INVOLVED. The message that follows the symbol contains important information about your safety. Carefully read the message. Make sure you fully understand the causes of possible injury or death.</i></b></p> <p>SB001</p>
---	--

IF THIS MACHINE IS USED BY AN EMPLOYEE, IS LOANED, OR IS RENTED, MAKE SURE THAT THE OPERATOR UNDERSTANDS THE TWO INSTRUCTIONS BELOW.

BEFORE THE OPERATOR STARTS THE ENGINE:

1. GIVE INSTRUCTIONS TO THE OPERATOR ON SAFE AND CORRECT USE OF THE MACHINE.
2. MAKE SURE THE OPERATOR READS AND UNDERSTANDS THE OPERATOR'S MANUAL FOR THIS MACHINE.



IMPROPER OPERATION OF THIS MACHINE CAN CAUSE INJURY OR DEATH.

BEFORE STARTING THE ENGINE, DO THE FOLLOWING:

1. READ THE OPERATOR'S MANUAL.
2. READ ALL SAFETY DECALS ON THE MACHINE.
3. CLEAR THE AREA OF OTHER PERSONS.

LEARN AND PRACTICE SAFE USE OF MACHINE CONTROLS IN A SAFE, OPEN AREA BEFORE YOU OPERATE THIS MACHINE ON A JOB SITE.

It is your responsibility to observe pertinent laws and regulations and to follow manufacturer's instructions on machine operation and maintenance.

See your Authorized Case dealer for additional operator's manuals, parts catalogs, and service manuals.

# To The Owner

Assembled in this manual are operation, lubrication, and maintenance instructions for the International 4100 Four-Wheel Drive Tractor. This material has been prepared in detail in the hope that it will help you to better understand the correct care and efficient operation of your tractor.

Your new International Harvester tractor is designed to meet today's exacting operating requirements. The ease and comfort of operation, the ability to match ground speeds to engine power and work requirement, and the effortless versatility of the hydraulic system are intended to lighten your work and shorten your hours on the job.

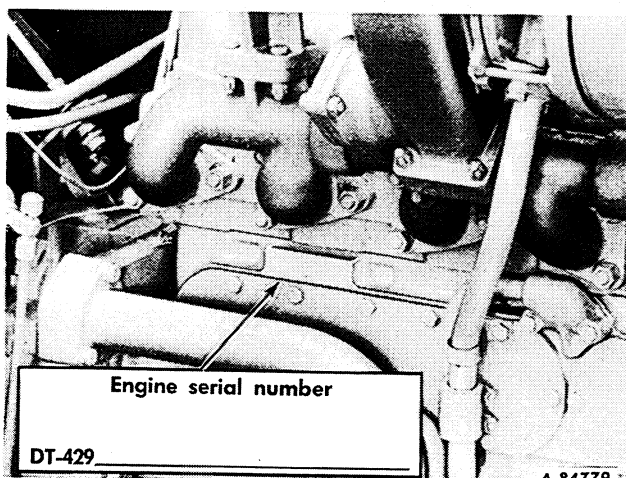
Your local International Harvester dealer is interested in the performance you receive from this tractor. He has factory-trained servicemen, informed in the latest method of servicing tractors, and modern tools, and original-equipment IH service parts which assure proper fit and good performance.

To obtain top performance and assure economical operation the tractor should be inspected, depending on its use, periodically, or at least once a year, by your International Harvester Dealer.

Before you operate the tractor study this manual carefully. It has been prepared to help you operate and maintain your tractor with utmost efficiency. New copies may be ordered from your dealer at a nominal price.

When in need of parts, always specify the tractor and engine serial numbers, including prefix and suffix letters. Write these serial numbers in the spaces provided below.

**Note:** When transporting a unit, seal the intake and exhaust pipe openings to prevent the entrance of foreign materials.



epcatalogs.com

# CONTENTS

Description	Page No.
CONTENTS . . . . .	1
INTRODUCTION . . . . .	2
INSTRUMENTS AND CONTROLS . . . . .	3
BEFORE OPERATING YOUR NEW TRACTOR . . . . .	4
DRIVING THE TRACTOR . . . . .	5 to 7
ENGINE AND FUEL SYSTEM . . . . .	7 to 13
BASIC HYDRAULIC SYSTEM WITH POWER STEERING . . . . .	13 to 15
HYDRAULIC CONTROLS FOR THREE-POINT HITCH . . . . .	15, 16
THREE-POINT HITCH . . . . .	16 to 19
AUXILIARY VALVES AND REMOTE CYLINDERS . . . . .	22, 23
HITCHING TRAILING EQUIPMENT TO THE TRACTOR . . . . .	24
POWER TAKE-OFF . . . . .	25
COOLING SYSTEM . . . . .	25 to 28
AIR CLEANING SYSTEM . . . . .	28 to 31
ELECTRICAL SYSTEM . . . . .	31 to 39
MINOR ENGINE SERVICE OPERATIONS . . . . .	40 to 42
STEERING, WHEELS AND PNEUMATIC TIRES . . . . .	43
WEIGHTS . . . . .	44 to 46
BRAKES . . . . .	46, 47
ENGINE CLUTCH . . . . .	47, 48
STOPPING THE TRACTOR . . . . .	48, 49
COLD WEATHER PRECAUTIONS . . . . .	50
TROUBLE SHOOTING . . . . .	51 to 55
LUBRICATION . . . . .	55 to 59
LUBRICATION TABLE . . . . .	59
LUBRICATION GUIDE . . . . .	60 to 63
PREVENTIVE MAINTENANCE GUIDE . . . . .	64, 65
SPECIFICATIONS . . . . .	65 to 67
QUICK COUPLER . . . . .	20, 21
EXTRA EQUIPMENT AND ACCESSORIES . . . . .	67
INDEX . . . . .	68, 69

[Buy now](#)

[Case 4100 Tractor PDF Operators Manual](#)

[With Instant Download](#)