

epcatalogs.com

666 Tractor

Operators Manual

1084361R1

Reprinted





This symbol means ATTENTION! BECOME ALERT! YOUR SAFETY IS INVOLVED. The message that follows the symbol contains important information about your safety. Carefully read the message. Make sure you fully understand the causes of possible injury or death.

SB001

IF THIS MACHINE IS USED BY AN EMPLOYEE, IS LOANED, OR IS RENTED, MAKE SURE THAT THE OPERATOR UNDERSTANDS THE TWO INSTRUCTIONS BELOW.

BEFORE THE OPERATOR STARTS THE ENGINE:

1. GIVE INSTRUCTIONS TO THE OPERATOR ON SAFE AND CORRECT USE OF THE MACHINE.
2. MAKE SURE THE OPERATOR READS AND UNDERSTANDS THE OPERATOR'S MANUAL FOR THIS MACHINE.



WARNING

IMPROPER OPERATION OF THIS MACHINE CAN CAUSE INJURY OR DEATH.

BEFORE STARTING THE ENGINE, DO THE FOLLOWING:

1. READ THE OPERATOR'S MANUAL.
2. READ ALL SAFETY DECALS ON THE MACHINE.
3. CLEAR THE AREA OF OTHER PERSONS.

LEARN AND PRACTICE SAFE USE OF MACHINE CONTROLS IN A SAFE, CLEAR AREA BEFORE YOU OPERATE THIS MACHINE ON A JOB SITE.

It is your responsibility to observe pertinent laws and regulations and to follow manufacturer's instructions on machine operation and maintenance.

See your Authorized Case dealer for additional operator's manuals, parts catalogs, and service manuals.

To The Owner

Assembled in this manual are operation, lubrication, and maintenance instructions for the International Farmall 666 Gear Drive Tractor. This material has been prepared in detail in the hope that it will help you to better understand the correct care and efficient operation of your tractor.

Your new International Harvester tractor is designed to meet today's exacting operating requirements. The ease and comfort of operation, the ability to match ground speeds to engine power and work requirement, and the effortless versatility of the hydraulic system are intended to lighten your work and shorten your hours on the job.

Your local International Harvester dealer is interested in the performance you receive from this tractor. He has factory-trained service men, informed in the latest method of servicing tractors, and modern tools, and original equipment IH service parts which assure proper fit and good performance.

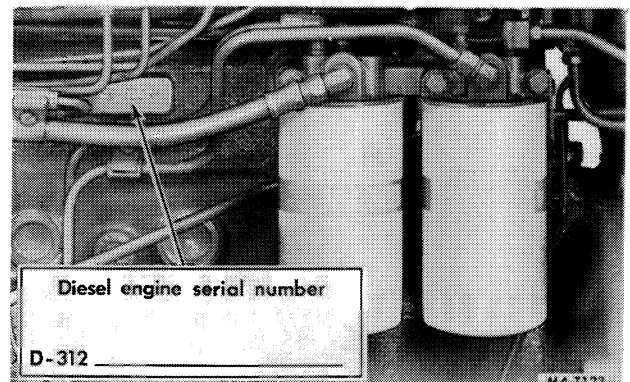
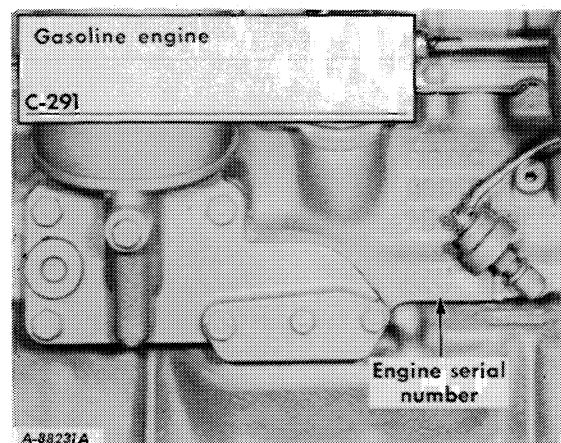
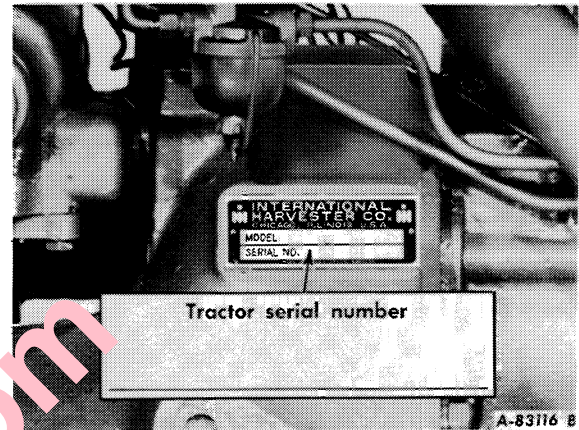
To obtain top performance and assure economical operation the tractor should be inspected, depending on its use, periodically, or at least once a year, by your International Harvester dealer.

Before you operate the tractor study this manual carefully. It has been prepared to help you operate and maintain your tractor with utmost efficiency. New copies may be ordered from your dealer at a nominal price.

When in need of parts, always specify the tractor and engine serial numbers, including prefix and suffix letters. Write these serial numbers in the spaces provided.



Universal symbols are used to pictorially identify various tractor instruments and controls. Throughout this manual, an identifying symbol is placed by the instructions like this example for engine coolant temperature. The waves signify water or coolant and the thermometer indicates temperature. Regardless of the language used in a nation, and without translation, this symbol means water or coolant temperature.



CONTENTS

TO THE OWNER	INSIDE FRONT COVER	GASOLINE ENGINE AND FUEL SYSTEM	15,16,17
INTRODUCTION	4	Starting the engine	
WORK SAFELY — FOLLOW THESE RULES	5, 6, 7	After the engine is running	
Before starting		Stopping the engine	
During operation		Cleaning the fuel strainer and sediment bowl	
Transporting		Carburetor	
After operation		Fuel shut-off solenoid valve	
INSTRUMENTS AND CONTROLS	8	DIESEL ENGINE AND FUEL SYSTEM	18 to 23
BEFORE OPERATING YOUR NEW TRACTOR	9	Fuel system	
Tractor break-in procedure		Warranty notice	
Lubrication		Venting the fuel system	
Tires		Fuel storage	
Air cleaning system		Engine coolant heater	
Engine cooling system		Starting the engine	
Fuel system		Stopping the engine	
DRIVING THE TRACTOR	10 to 14	Changing the ether fluid container	
Preparing the tractor for each day's work		Draining water from the tractor fuel tank	
Fuel gauge		Fuel filters	
Filling the fuel tank		Fuel injection pump and nozzles	
Adjusting the seat		Injection pump governor	
Steering the tractor		HYDRAULIC CONTROLS FOR THREE-POINT HITCH	23 to 26
Locking the brake		Position Control (inside lever)	
Safety starting switch		Draft control (outside lever)	
Gear shift lever		Run range (inside lever)	
Starting the tractor		THREE-POINT HITCH	27 to 33
Torque multiplier		Lift links and leveling cranks	
Stopping the tractor		Rigid hitch position	
Brake lock		Free to float position	
Towing the tractor		Hitch lower links	
Tachometer-speedometer		Hitch upper link	
		Lateral limiter	
		Coupling the equipment	
		Example of operating the three-point hitch with draft control	
		Uncoupling the equipment	
		Removing the three-point hitch linkage	
		Installing the three-point hitch linkage	

CONTENTS

HITCHING TRAILING EQUIPMENT TO THE TRACTOR	34,35,36	AIR CLEANING SYSTEM	44, 45
Fixed-type (quick attachable) drawbar		Dry-type air cleaner	
Swinging drawbar		Air cleaner service indicator	
Telescoping-type swinging drawbar		Removing and cleaning the filter element	
Cross drawbar		Inspection	
		Automatic dust unloader	
AUXILIARY VALVE, REMOTE CYLINDERS AND HYDRAULIC OUTLETS	36 to 40	ELECTRICAL SYSTEM	45 to 50
Connecting hoses to the rear hydraulic outlets		Charging system for alternator-generator	
Connecting hoses to front hydraulic outlets		Cranking system	
Thermal expansion pressures		Ignition system (gasoline engine or diesel)	
Operating double-acting cylinders		Lighting system	
Operating single-acting cylinders		Ignition switch positions	
Float lockout		Telltails	
Lower and float lockout		Fuse	
Adding fluid after connecting cylinders and hoses		Battery	
Freeing the system of trapped air		FRONT WHEELS	50,51,52
POWER TAKE-OFF	40, 41	Adjustable wide tread front axle	
Operating the independent power take-off		Farmall hi-clear adjustable front axle	
		Tricycle front axle	
COOLING SYSTEM	41,42,43	Adjusting wide-tread front axle and farmall hi-clear adjustable front axle for tread widths	
Temperature gauge		Adjusting the toe-in	
Filling the cooling system		REAR WHEELS	52 to 55
Adding coolant to the cooling system		Adjusting the tread widths	
Cleaning the cooling system		Hub clamp bolts	
Radiators and transmission oil cooler		Assembling the rear wheel double-beaded rims	
Water pump, alternator-generator, and fan belt tension		Reversing the rear wheels	
		Wheels with double-beaded rims	
		Dual rear wheels	

[Buy now](#)

[Case 666 Tractor PDF Operator's Manuals](#)

[With Instant Download](#)