

epcatalogs.com

544 Tractor

Operators Manual

1084061R1

Reprinted

CASE 



This symbol means ATTENTION! BECOME ALERT! YOUR SAFETY IS INVOLVED. The message that follows the symbol contains important information about your safety. Carefully read the message. Make sure you fully understand the causes of possible injury or death.

SB001

IF THIS MACHINE IS USED BY AN EMPLOYEE, IS LOANED, OR IS RENTED, MAKE SURE THAT THE OPERATOR UNDERSTANDS THE TWO INSTRUCTIONS BELOW.

BEFORE THE OPERATOR STARTS THE ENGINE:

1. GIVE INSTRUCTIONS TO THE OPERATOR ON SAFE AND CORRECT USE OF THE MACHINE.
2. MAKE SURE THE OPERATOR READS AND UNDERSTANDS THE OPERATOR'S MANUAL FOR THIS MACHINE.



WARNING

IMPROPER OPERATION OF THIS MACHINE CAN CAUSE INJURY OR DEATH.

BEFORE STARTING THE ENGINE, DO THE FOLLOWING:

1. READ THE OPERATOR'S MANUAL.
2. READ ALL SAFETY DECALS ON THE MACHINE.
3. CLEAR THE AREA OF OTHER PERSONS.

LEARN AND PRACTICE SAFE USE OF MACHINE CONTROLS IN A SAFE, CLEAR AREA BEFORE YOU OPERATE THIS MACHINE ON A JOB SITE.

It is your responsibility to observe pertinent laws and regulations and to follow manufacturer's instructions on machine operation and maintenance.

See your Authorized Case dealer for additional operator's manuals, parts catalogs, and service manuals.

To The Owner

Your new International Harvester tractor is designed to meet today's exacting operating requirements. The ease and comfort of operation, the ability to match ground speeds to engine power and work requirement, and the effortless versatility of the hydraulic system are intended to lighten your work and shorten your hours on the job.

Your tractor has either a conventional clutch or a hydrostatic drive.

The hydrostatic drive will require minimum service if recommended operating and maintenance procedures are followed. Should you have difficulties with the unit consult your International Harvester dealer.

UNDER NO CIRCUMSTANCES SHOULD YOU ATTEMPT TO SERVICE THESE UNITS YOURSELF. Only your dealer is authorized to repair or replace units on the hydrostatic drive under the terms of the warranty.

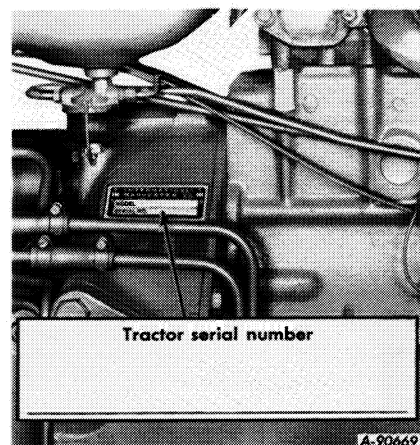
There are a few facts that you should know about your hydrostatic drive tractor.

1. You cannot start the engine by towing the tractor, attempts to do so will damage the hydrostatic motor.
2. To tow the tractor, place the Hi-Lo Range Selector in neutral. Refer to Towing the Tractor on page 17.
3. Never attempt to effect a high speed coast by putting the speed ratio control lever in neutral or by depressing the Foot-N-Inch pedal.
4. Never coast the tractor with the engine shut off.

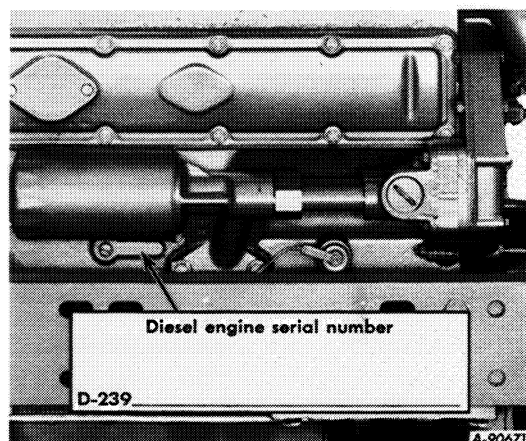
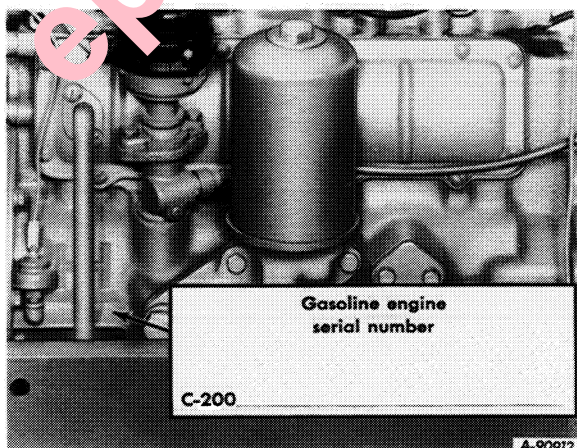
Change the filters at the specified intervals. The 10 hour and 100 hour changes are extremely important and must not be overlooked.



Tractors with Hydrostatic Drive



Tractors with Gear Drive



Cover Illustration
Farmall 544 Hydrostatic Drive Tractor
with Adjustable Wide Front Axle

epcatalogs.com

To The Owner

Your local International Harvester dealer is interested in the performance you receive from this tractor. He has factory-trained servicemen, informed in the latest method of servicing tractors, and modern tools, and original-equipment IH service parts which assure proper fit and good performance.

To obtain top performance and assure economical operation the tractor should be inspected, depending on its use, periodically, or at least once a year, by your International Harvester dealer.

Before you operate the tractor study this manual carefully. It has been prepared to help you operate and maintain your tractor with utmost efficiency. New copies may be ordered from your dealer at a nominal price.

When in need of parts, always specify the tractor and engine serial numbers, including prefix and suffix letters. Write these serial numbers in the spaces provided.

CONTENTS

Description	Page No.
CONTENTS.....	1
WORK SAFELY - FOLLOW THESE RULES.....	3, 4
INTRODUCTION.....	2
INSTRUMENTS AND CONTROLS.....	5 to 10
BEFORE OPERATING YOUR NEW TRACTOR.....	11
DRIVING THE TRACTOR.....	12 to 19
GASOLINE ENGINE AND FUEL SYSTEM.....	19 to 22
DIESEL ENGINE AND FUEL SYSTEM.....	23 to 30
BASIC HYDRAULIC SYSTEM WITH POWER STEERING.....	31
HYDRAULIC CONTROLS FOR HITCHES.....	32 to 35
THREE-POINT HITCH (Farmall 544).....	36 to 40
THREE-POINT HITCH (International 544).....	44 to 51
TWO-POINT FAST-HITCH (Farmall 544).....	40 to 43
WEIGHT TRANSFER HITCH.....	52, 53
AUXILIARY VALVES REMOTE CYLINDERS AND HYDRAULIC OUTLETS.....	54 to 59
HITCHING TRAILING EQUIPMENT TO THE TRACTOR.....	59 to 63
POWER TAKE-OFF.....	64
BELT PULLEY.....	65, 66
COOLING SYSTEM.....	66 to 68
AIR CLEANING SYSTEM.....	69 to 72
ELECTRICAL SYSTEM.....	73 to 92
MINOR ENGINE SERVICE OPERATIONS.....	93 to 100
FRONT WHEELS.....	101 to 104
REAR WHEELS.....	105 to 112
WEIGHTS.....	113 to 117
PNEUMATIC TIRES.....	118, 119
BRAKES.....	119, 120
CLUTCHES (Gear Drive).....	120 to 122
HYDROSTATIC CONTROLS (Hydrostatic drive).....	123 to 126
STORING THE TRACTOR.....	127, 128
COLD WEATHER PRECAUTIONS.....	128, 129
TROUBLE SHOOTING.....	130 to 136
LUBRICATION.....	136 to 142
LUBRICATION TABLE.....	143
LUBRICATION GUIDE.....	144 to 152
PREVENTIVE MAINTENANCE GUIDE.....	153, 154
SPECIFICATIONS.....	155 to 160
OPTIONAL EQUIPMENT.....	161
INDEX.....	162 to 164

[Buy now](#)

[Case 544 Tractors PDF Operator's Manual](#)

[With Instant Download](#)